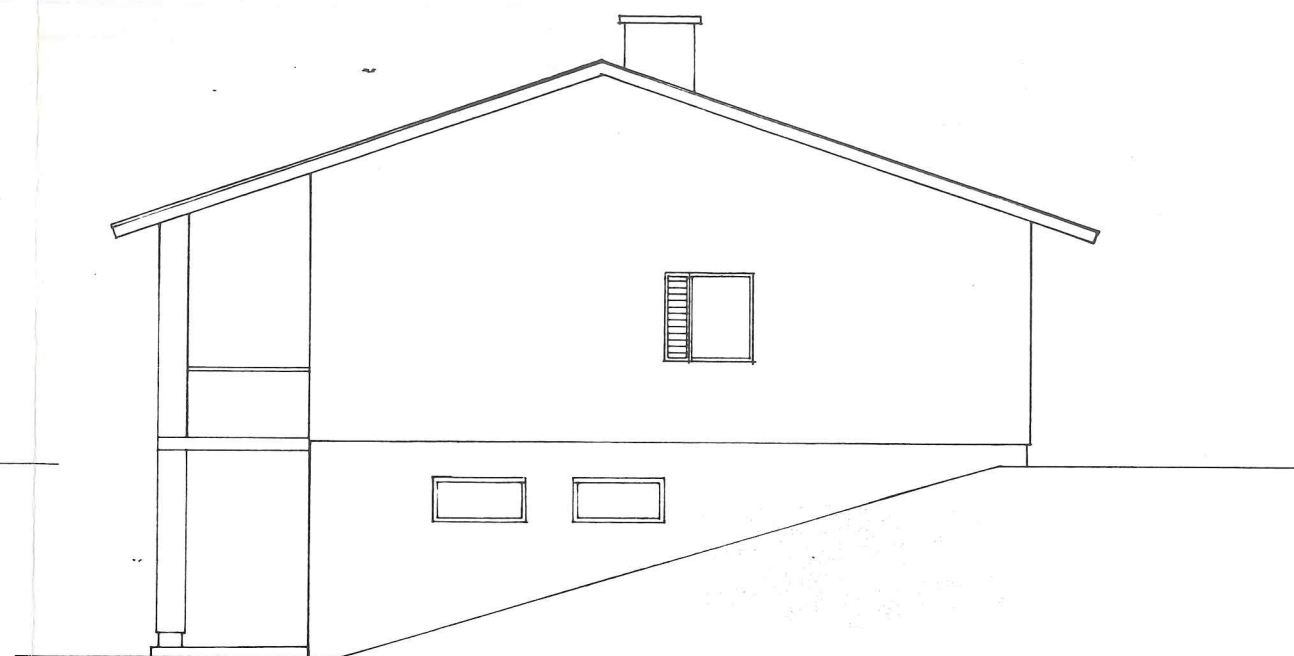


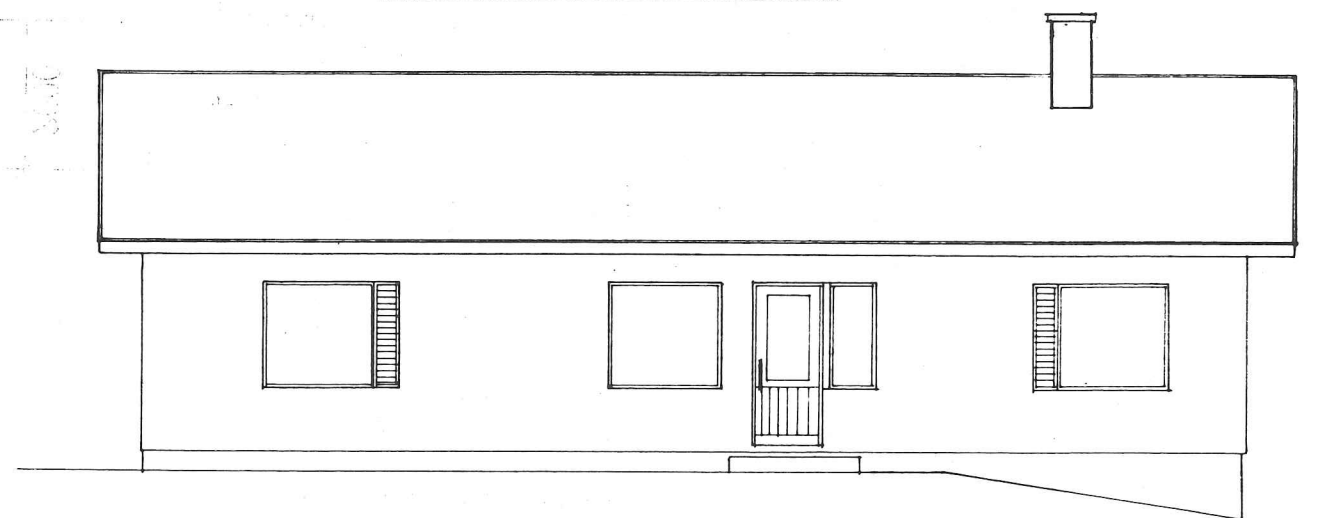
Kaakkoon



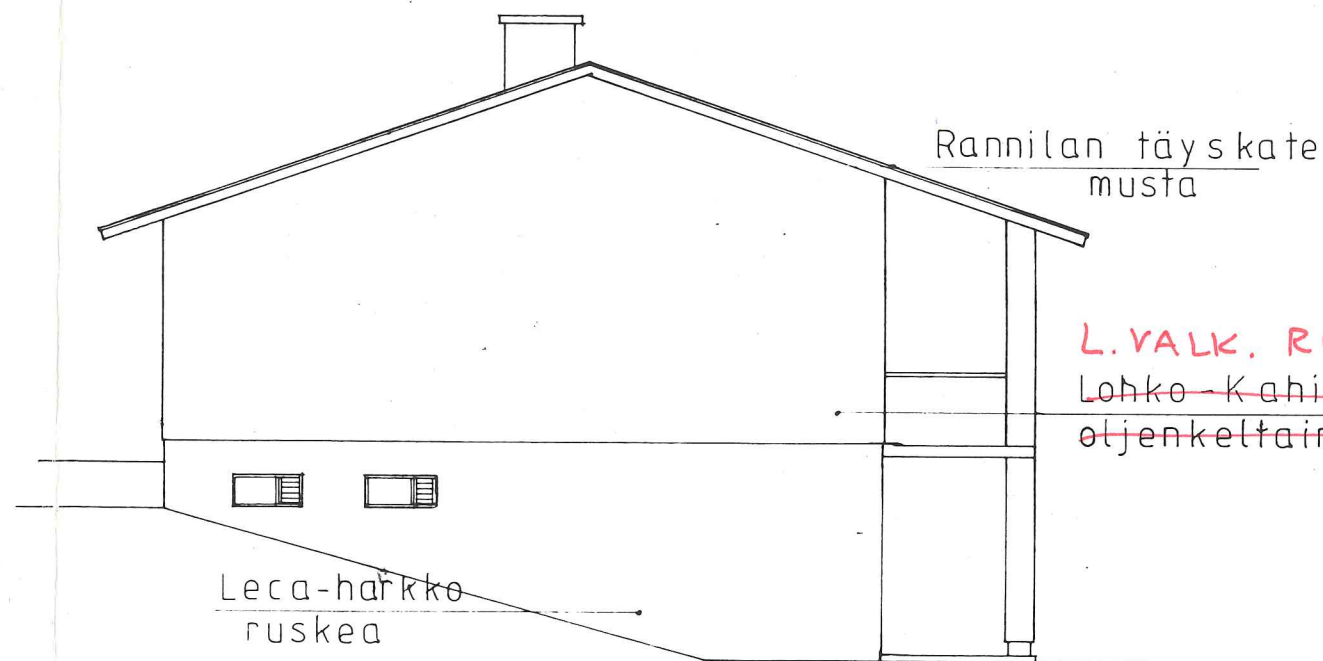
Koilliseen



Luoteeseen



Lounaaseen



Hormisto



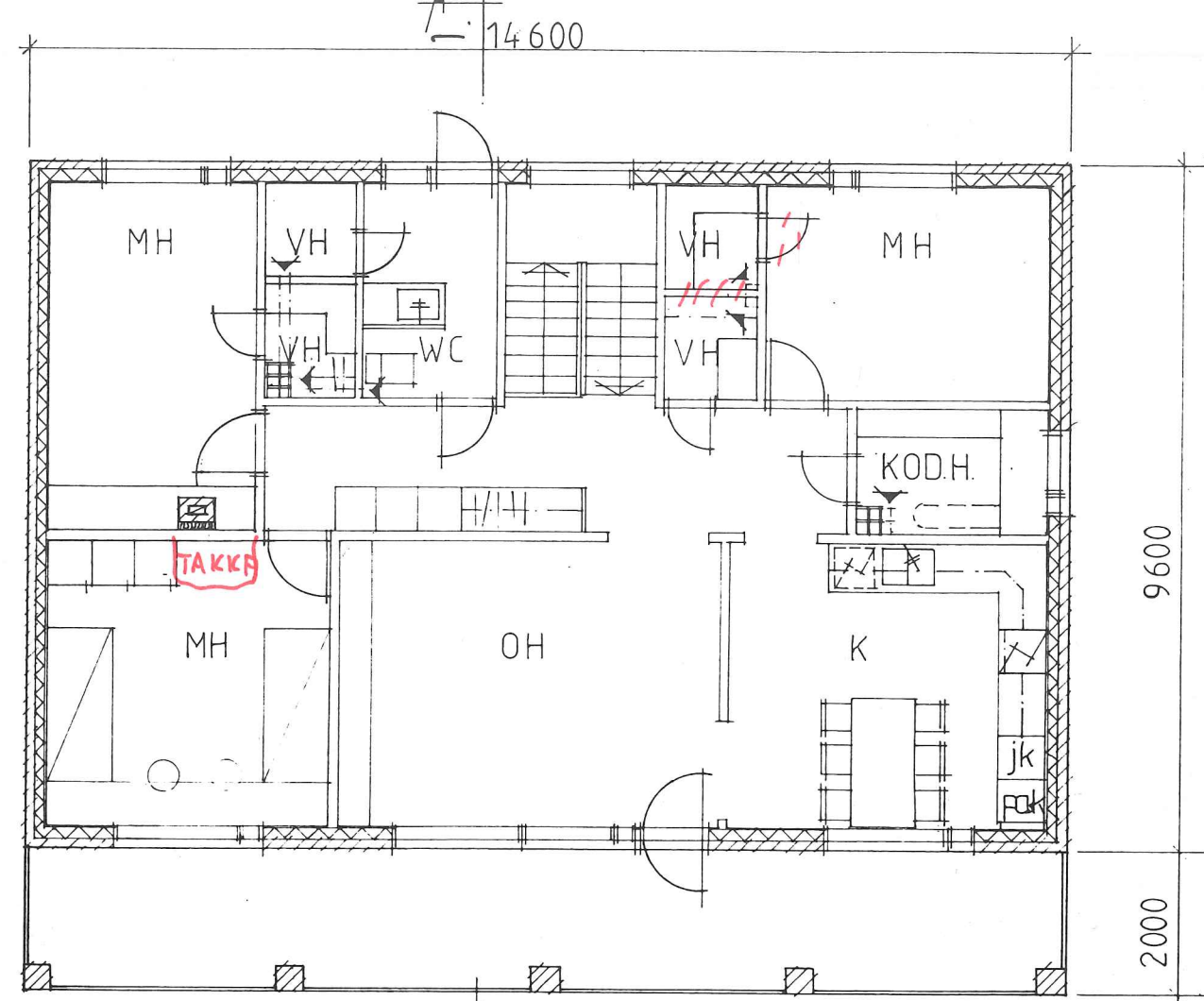
1. Takka savuhormi

| | |
|--------------|----------------------|
| Pinta-ala | 140 m ² |
| Huoneistoala | 201 m ² |
| Kerrosala | 229,5 m ² |
| Tilavuus | 790 m ³ |



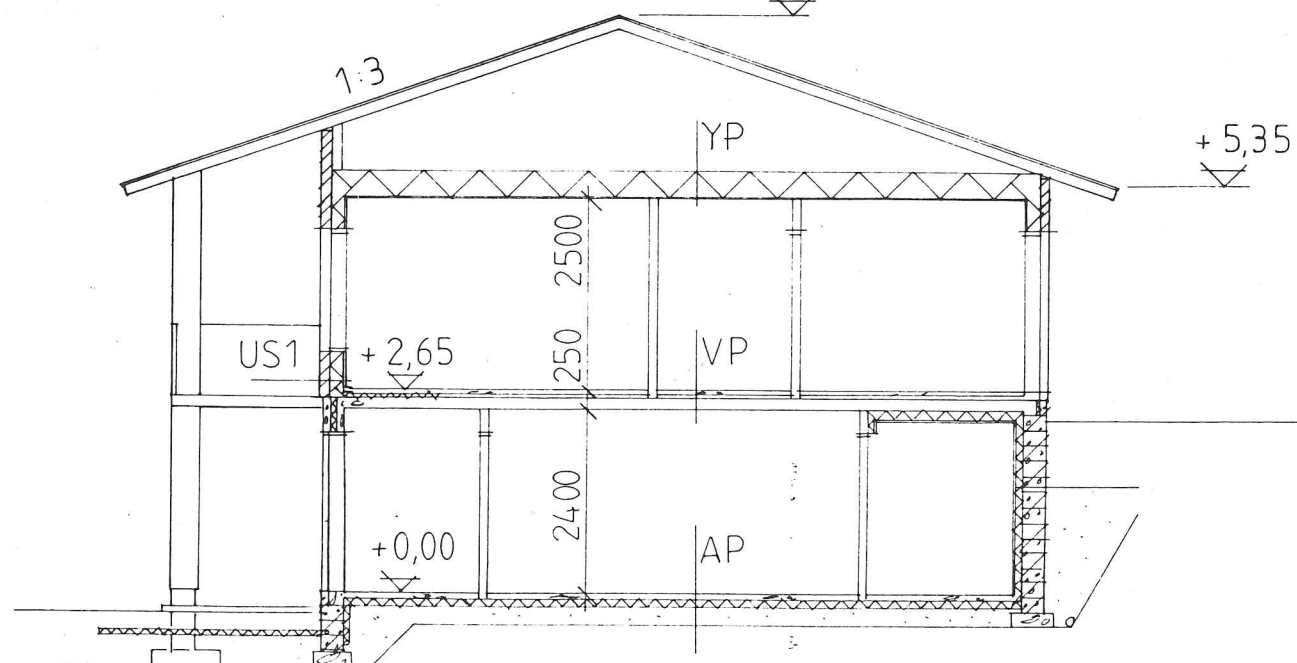
C.

A suinkerros

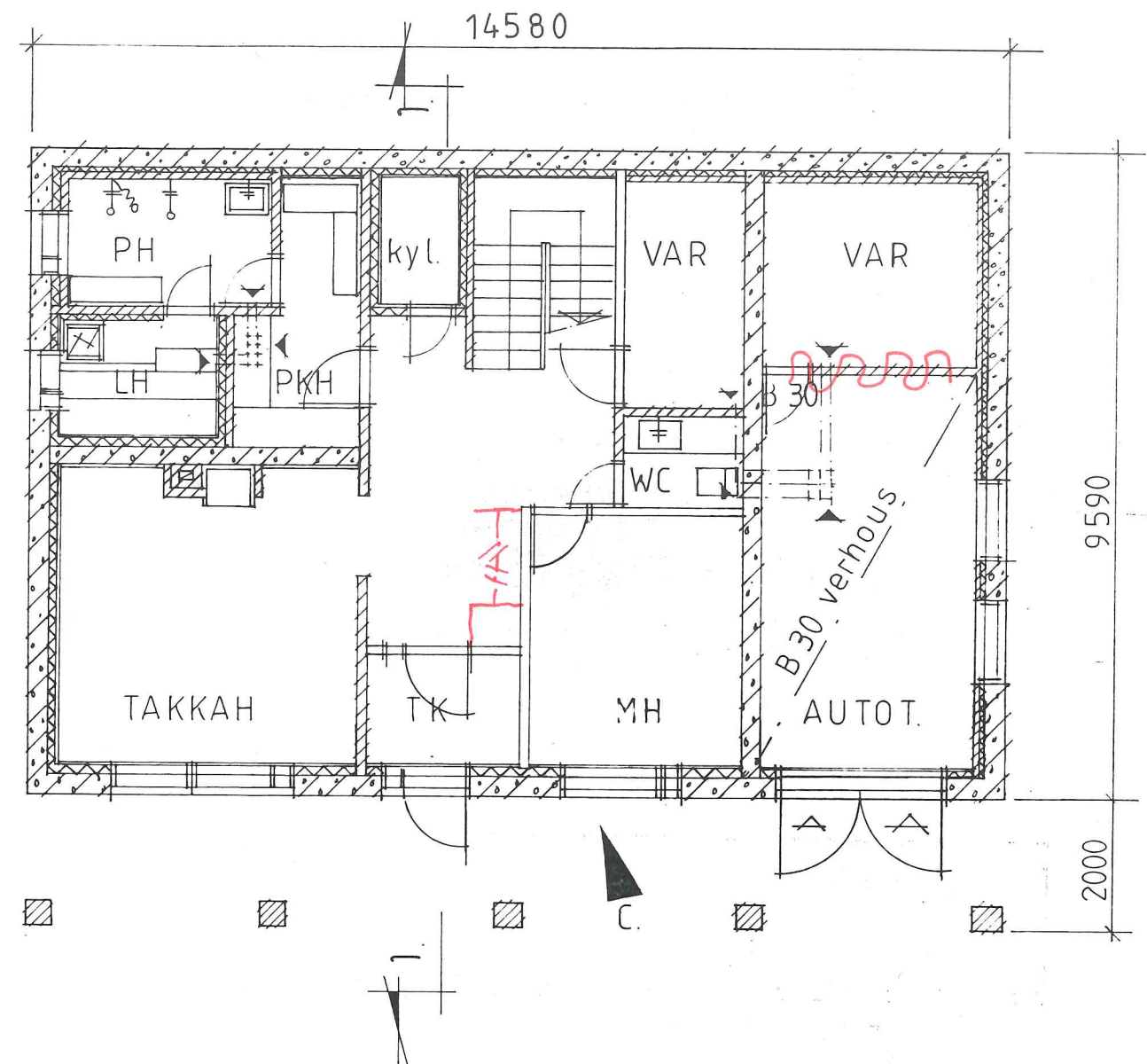


1. ————— 1.

+7,55



Kellarikerros



YP

Tuulensuojalevy 50mm
Minervilla 250 "
Höyrysulku
Harvalaud.
Paneeli

VP

Pintabetoni 50mm
Styrox 50 "
Teräsbetoni 150 "

AP

Teräsbetoni 80mm
Styrox 100 "
Sorastus \geq 200 "

US 1

RAPPAUS

Tiili 85 mm
Ilmarako
Bitulit -levy 12 "
Minervilla 175 "
Höyrysulku
Sis.levy

US2

Leca-harkko 290 mm
Min.villa 100 "
Höyrysulku
Gyproc-levy 13 "