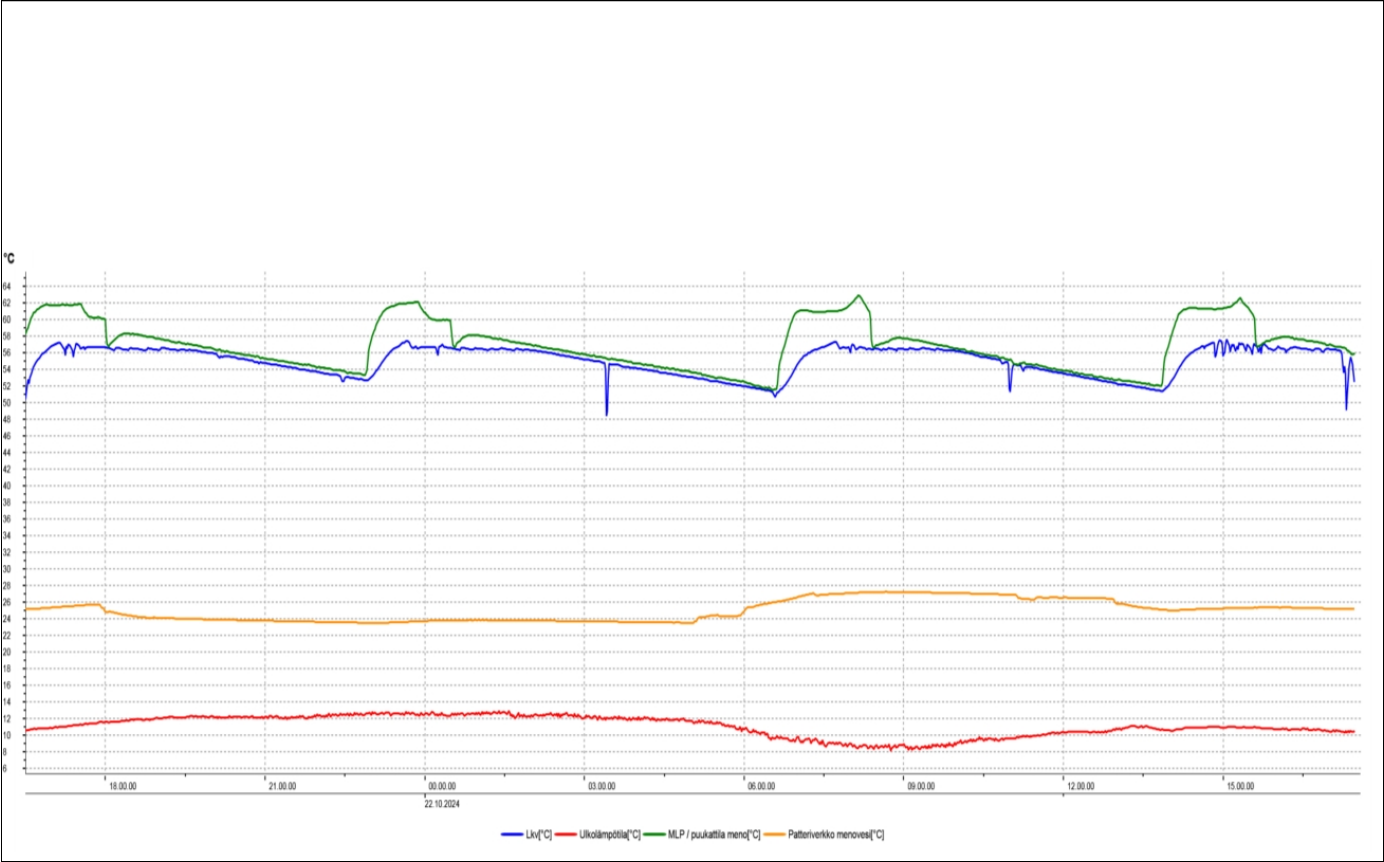


Instrument name: Testo		22.10.2024			
Start time: 21.10.2024 16.30.03		Minimum	Maximum	Mean value	Limit values
End time: 22.10.2024 17.35.03	Lkv [°C]	48,4	57,6	55,076	55,0/65,0
Measurement channels: 4	Ulkolämpötila [°C]	8,1	12,9	11,083	-195,0/1000,0
Measured values: 1506	MLP / puukattila me	51,5	63,0	56,884	-195,0/1000,0
SN 40725629	Patteriverkko menov	23,5	27,3	25,004	-195,0/1000,0
Lämpötilat MLP					



ID	Date/time	Lkv [°C]	Ulkolämpötila [°C]	MLP / puukattila meno [°C]	Patteriverkko menovesi [°C]
1	21.10.2024 16.30.03	50.4	10.5	58.2	25.2
2	21.10.2024 16.31.03	51.3	10.5	58.5	25.2
3	21.10.2024 16.32.03	52.1	10.6	58.8	25.2
4	21.10.2024 16.33.03	52.8	10.6	59.0	25.2
5	21.10.2024 16.34.03	52.3	10.6	59.4	25.2
6	21.10.2024 16.35.03	53.0	10.6	59.7	25.2
7	21.10.2024 16.36.03	52.9	10.7	60.1	25.2
8	21.10.2024 16.37.03	53.6	10.7	60.2	25.2
9	21.10.2024 16.38.03	54.0	10.7	60.5	25.2
10	21.10.2024 16.39.03	54.3	10.7	60.8	25.2
11	21.10.2024 16.40.03	54.5	10.8	60.8	25.2
12	21.10.2024 16.41.03	54.7	10.8	60.9	25.2

ID	Date/time	Lkv [°C]	Ulkolämpötila [°C]	MLP / puukattila meno [°C]	Patteriverkko menovesi [°C]
13	21.10.2024 16.42.03	54.9	10.7	61.0	25.2
14	21.10.2024 16.43.03	55.0	10.8	61.2	25.2
15	21.10.2024 16.44.03	55.2	10.8	61.2	25.2
16	21.10.2024 16.45.03	55.3	10.8	61.3	25.2
17	21.10.2024 16.46.03	55.4	10.8	61.4	25.2
18	21.10.2024 16.47.03	55.6	10.8	61.5	25.2
19	21.10.2024 16.48.03	55.7	10.8	61.5	25.3
20	21.10.2024 16.49.03	55.9	10.8	61.6	25.3
21	21.10.2024 16.50.03	55.9	10.8	61.7	25.3
22	21.10.2024 16.51.03	56.0	10.8	61.7	25.3
23	21.10.2024 16.52.03	56.1	10.8	61.7	25.3
24	21.10.2024 16.53.03	56.2	10.8	61.8	25.3
25	21.10.2024 16.54.03	56.3	10.8	61.8	25.3
26	21.10.2024 16.55.03	56.4	10.9	61.8	25.3
27	21.10.2024 16.56.03	56.5	10.8	61.8	25.3
28	21.10.2024 16.57.03	56.6	10.8	61.7	25.3
29	21.10.2024 16.58.03	56.7	10.9	61.7	25.3
30	21.10.2024 16.59.03	56.8	10.9	61.7	25.3
31	21.10.2024 17.00.03	56.8	10.8	61.7	25.4
32	21.10.2024 17.01.03	56.9	10.9	61.7	25.4
33	21.10.2024 17.02.03	57.0	10.9	61.7	25.4
34	21.10.2024 17.03.03	57.0	10.9	61.7	25.4
35	21.10.2024 17.04.03	57.1	11.0	61.7	25.4
36	21.10.2024 17.05.03	57.1	11.0	61.7	25.4
37	21.10.2024 17.06.03	57.2	10.9	61.7	25.4
38	21.10.2024 17.07.03	57.2	11.0	61.7	25.4
39	21.10.2024 17.08.03	57.2	11.0	61.7	25.4
40	21.10.2024 17.09.03	57.2	11.0	61.7	25.4
41	21.10.2024 17.10.03	57.1	11.0	61.7	25.4
42	21.10.2024 17.11.03	56.9	11.0	61.8	25.5
43	21.10.2024 17.12.03	56.7	11.0	61.8	25.5
44	21.10.2024 17.13.03	56.6	11.0	61.8	25.5
45	21.10.2024 17.14.03	56.4	11.0	61.7	25.5
46	21.10.2024 17.15.03	55.7	11.0	61.7	25.5
47	21.10.2024 17.16.03	56.8	11.0	61.7	25.5
48	21.10.2024 17.17.03	56.5	11.0	61.8	25.5
49	21.10.2024 17.18.03	57.0	11.1	61.7	25.5
50	21.10.2024 17.19.03	56.9	11.1	61.7	25.5
51	21.10.2024 17.20.03	56.9	11.1	61.7	25.5
52	21.10.2024 17.21.03	56.8	11.1	61.7	25.5
53	21.10.2024 17.22.03	56.5	11.1	61.7	25.5
54	21.10.2024 17.23.03	56.2	11.1	61.7	25.5
55	21.10.2024 17.24.03	55.5	11.2	61.7	25.5
56	21.10.2024 17.25.03	56.3	11.2	61.8	25.6

ID	Date/time	Lkv [°C]	Ulkolämpötila [°C]	MLP / puukattila meno [°C]	Patteriverkko menovesi [°C]
57	21.10.2024 17.26.03	56.6	11.2	61.8	25.6
58	21.10.2024 17.27.03	57.1	11.1	61.8	25.6
59	21.10.2024 17.28.03	57.2	11.2	61.8	25.6
60	21.10.2024 17.29.03	57.0	11.3	61.8	25.6
61	21.10.2024 17.30.03	57.0	11.2	61.9	25.6
62	21.10.2024 17.31.03	56.8	11.3	61.9	25.6
63	21.10.2024 17.32.03	56.5	11.3	61.8	25.6
64	21.10.2024 17.33.03	56.5	11.3	61.8	25.6
65	21.10.2024 17.34.03	56.6	11.2	61.5	25.6
66	21.10.2024 17.35.03	56.7	11.3	61.3	25.6
67	21.10.2024 17.36.03	56.7	11.3	61.2	25.6
68	21.10.2024 17.37.03	56.4	11.3	60.9	25.6
69	21.10.2024 17.38.03	56.6	11.4	60.8	25.7
70	21.10.2024 17.39.03	56.7	11.3	60.7	25.7
71	21.10.2024 17.40.03	56.7	11.3	60.5	25.7
72	21.10.2024 17.41.03	56.7	11.3	60.4	25.7
73	21.10.2024 17.42.03	56.7	11.4	60.3	25.7
74	21.10.2024 17.43.03	56.7	11.4	60.3	25.7
75	21.10.2024 17.44.03	56.7	11.4	60.3	25.7
76	21.10.2024 17.45.03	56.7	11.4	60.2	25.7
77	21.10.2024 17.46.03	56.7	11.4	60.2	25.7
78	21.10.2024 17.47.03	56.7	11.5	60.1	25.7
79	21.10.2024 17.48.03	56.7	11.4	60.2	25.7
80	21.10.2024 17.49.03	56.7	11.4	60.2	25.7
81	21.10.2024 17.50.03	56.7	11.4	60.2	25.7
82	21.10.2024 17.51.03	56.7	11.5	60.2	25.7
83	21.10.2024 17.52.03	56.7	11.5	60.3	25.7
84	21.10.2024 17.53.03	56.7	11.4	60.2	25.7
85	21.10.2024 17.54.03	56.7	11.6	60.2	25.7
86	21.10.2024 17.55.03	56.7	11.6	60.2	25.5
87	21.10.2024 17.56.03	56.7	11.6	60.1	25.3
88	21.10.2024 17.57.03	56.7	11.5	60.1	25.3
89	21.10.2024 17.58.03	56.7	11.5	60.1	25.3
90	21.10.2024 17.59.03	56.7	11.6	60.0	25.0
91	21.10.2024 18.00.03	56.7	11.6	60.0	24.9
92	21.10.2024 18.01.03	56.7	11.6	58.0	24.8
93	21.10.2024 18.02.03	56.6	11.6	57.0	24.8
94	21.10.2024 18.03.03	56.6	11.6	56.9	24.8
95	21.10.2024 18.04.03	56.6	11.5	56.7	24.9
96	21.10.2024 18.05.03	56.5	11.6	57.0	24.9
97	21.10.2024 18.06.03	56.5	11.6	57.1	24.9
98	21.10.2024 18.07.03	56.5	11.6	57.2	24.8
99	21.10.2024 18.08.03	56.4	11.6	57.3	24.8
100	21.10.2024 18.09.03	56.4	11.6	57.4	24.8

ID	Date/time	Lkv [°C]	Ulkolämpötila [°C]	MLP / puukattila meno [°C]	Patteriverkko menovesi [°C]
101	21.10.2024 18.10.03	56.3	11.6	57.5	24.8
102	21.10.2024 18.11.03	56.3	11.7	57.6	24.7
103	21.10.2024 18.12.03	56.6	11.6	57.7	24.7
104	21.10.2024 18.13.03	56.7	11.6	57.8	24.7
105	21.10.2024 18.14.03	56.6	11.6	57.9	24.6
106	21.10.2024 18.15.03	56.6	11.7	58.0	24.6
107	21.10.2024 18.16.03	56.6	11.6	58.1	24.6
108	21.10.2024 18.17.03	56.5	11.6	58.1	24.6
109	21.10.2024 18.18.03	56.5	11.7	58.2	24.6
110	21.10.2024 18.19.03	56.4	11.7	58.2	24.5
111	21.10.2024 18.20.03	56.4	11.7	58.3	24.5
112	21.10.2024 18.21.03	56.4	11.7	58.3	24.5
113	21.10.2024 18.22.03	56.4	11.7	58.3	24.5
114	21.10.2024 18.23.03	56.4	11.7	58.3	24.5
115	21.10.2024 18.24.03	56.4	11.8	58.3	24.5
116	21.10.2024 18.25.03	56.4	11.8	58.3	24.4
117	21.10.2024 18.26.03	56.3	11.7	58.3	24.4
118	21.10.2024 18.27.03	56.5	11.8	58.3	24.4
119	21.10.2024 18.28.03	56.6	11.8	58.3	24.4
120	21.10.2024 18.29.03	56.6	11.7	58.2	24.4
121	21.10.2024 18.30.03	56.5	11.9	58.3	24.3
122	21.10.2024 18.31.03	56.5	11.9	58.3	24.3
123	21.10.2024 18.32.03	56.5	11.8	58.2	24.3
124	21.10.2024 18.33.03	56.5	11.8	58.2	24.3
125	21.10.2024 18.34.03	56.5	11.9	58.1	24.3
126	21.10.2024 18.35.03	56.5	11.9	58.2	24.3
127	21.10.2024 18.36.03	56.5	11.9	58.1	24.3
128	21.10.2024 18.37.03	56.5	11.9	58.2	24.2
129	21.10.2024 18.38.03	56.4	11.9	58.1	24.2
130	21.10.2024 18.39.03	56.4	11.9	58.1	24.2
131	21.10.2024 18.40.03	56.4	11.9	58.1	24.2
132	21.10.2024 18.41.03	56.4	11.9	58.1	24.2
133	21.10.2024 18.42.03	56.4	11.8	58.1	24.2
134	21.10.2024 18.43.03	56.3	11.9	58.0	24.2
135	21.10.2024 18.44.03	56.3	11.8	58.0	24.2
136	21.10.2024 18.45.03	56.3	11.8	58.0	24.2
137	21.10.2024 18.46.03	56.3	11.9	58.0	24.1
138	21.10.2024 18.47.03	56.4	11.8	57.9	24.1
139	21.10.2024 18.48.03	56.6	11.9	57.9	24.1
140	21.10.2024 18.49.03	56.5	11.9	57.9	24.1
141	21.10.2024 18.50.03	56.5	11.8	57.9	24.1
142	21.10.2024 18.51.03	56.5	11.9	57.9	24.1
143	21.10.2024 18.52.03	56.5	11.9	58.0	24.1
144	21.10.2024 18.53.03	56.5	11.9	57.9	24.1

ID	Date/time	Lkv [°C]	Ulkolämpötila [°C]	MLP / puukattila meno [°C]	Patteriverkko menovesi [°C]
145	21.10.2024 18.54.03	56.4	11.9	57.9	24.2
146	21.10.2024 18.55.03	56.4	11.9	57.8	24.2
147	21.10.2024 18.56.03	56.4	12.0	57.8	24.2
148	21.10.2024 18.57.03	56.4	12.0	57.7	24.1
149	21.10.2024 18.58.03	56.4	12.1	57.7	24.1
150	21.10.2024 18.59.03	56.4	12.1	57.7	24.1
151	21.10.2024 19.00.03	56.3	12.0	57.7	24.1
152	21.10.2024 19.01.03	56.3	12.0	57.7	24.1
153	21.10.2024 19.02.03	56.4	12.0	57.7	24.1
154	21.10.2024 19.03.03	56.6	12.1	57.6	24.1
155	21.10.2024 19.04.03	56.6	12.0	57.6	24.1
156	21.10.2024 19.05.03	56.6	12.0	57.6	24.1
157	21.10.2024 19.06.03	56.6	12.1	57.6	24.1
158	21.10.2024 19.07.03	56.6	12.1	57.5	24.1
159	21.10.2024 19.08.03	56.5	12.1	57.5	24.1
160	21.10.2024 19.09.03	56.5	12.1	57.5	24.1
161	21.10.2024 19.10.03	56.5	12.1	57.5	24.1
162	21.10.2024 19.11.03	56.5	12.2	57.5	24.1
163	21.10.2024 19.12.03	56.5	12.2	57.5	24.1
164	21.10.2024 19.13.03	56.4	12.2	57.4	24.1
165	21.10.2024 19.14.03	56.4	12.2	57.4	24.1
166	21.10.2024 19.15.03	56.4	12.1	57.3	24.1
167	21.10.2024 19.16.03	56.4	12.2	57.3	24.1
168	21.10.2024 19.17.03	56.4	12.2	57.3	24.1
169	21.10.2024 19.18.03	56.4	12.1	57.3	24.0
170	21.10.2024 19.19.03	56.4	12.2	57.2	24.0
171	21.10.2024 19.20.03	56.4	12.1	57.2	24.0
172	21.10.2024 19.21.03	56.3	12.1	57.2	24.0
173	21.10.2024 19.22.03	56.3	12.1	57.2	24.0
174	21.10.2024 19.23.03	56.3	12.1	57.3	24.0
175	21.10.2024 19.24.03	56.4	12.1	57.2	24.0
176	21.10.2024 19.25.03	56.4	12.1	57.2	24.0
177	21.10.2024 19.26.03	56.4	12.1	57.2	24.0
178	21.10.2024 19.27.03	56.4	12.1	57.1	24.0
179	21.10.2024 19.28.03	56.4	12.1	57.1	24.0
180	21.10.2024 19.29.03	56.4	12.1	57.1	24.0
181	21.10.2024 19.30.03	56.4	12.1	57.1	24.0
182	21.10.2024 19.31.03	56.3	12.2	57.0	24.0
183	21.10.2024 19.32.03	56.3	12.2	57.0	24.0
184	21.10.2024 19.33.03	56.3	12.3	57.1	24.0
185	21.10.2024 19.34.03	56.3	12.2	57.0	24.0
186	21.10.2024 19.35.03	56.4	12.3	57.0	24.0
187	21.10.2024 19.36.03	56.3	12.3	56.9	24.0
188	21.10.2024 19.37.03	56.3	12.3	57.0	24.0

ID	Date/time	Lkv [°C]	Ulkolämpötila [°C]	MLP / puukattila meno [°C]	Patteriverkko menovesi [°C]
189	21.10.2024 19.38.03	56.3	12.3	56.9	24.0
190	21.10.2024 19.39.03	56.3	12.4	56.9	24.0
191	21.10.2024 19.40.03	56.3	12.2	56.9	24.0
192	21.10.2024 19.41.03	56.3	12.3	56.9	24.0
193	21.10.2024 19.42.03	56.3	12.3	56.9	24.0
194	21.10.2024 19.43.03	56.3	12.2	56.9	24.0
195	21.10.2024 19.44.03	56.2	12.2	56.8	24.0
196	21.10.2024 19.45.03	56.2	12.2	56.8	24.0
197	21.10.2024 19.46.03	56.2	12.2	56.8	24.0
198	21.10.2024 19.47.03	56.2	12.2	56.8	24.0
199	21.10.2024 19.48.03	56.2	12.2	56.7	24.0
200	21.10.2024 19.49.03	56.1	12.3	56.7	24.0
201	21.10.2024 19.50.03	56.1	12.3	56.7	23.9
202	21.10.2024 19.51.03	56.1	12.3	56.6	23.9
203	21.10.2024 19.52.03	56.1	12.2	56.6	23.9
204	21.10.2024 19.53.03	56.1	12.3	56.6	23.9
205	21.10.2024 19.54.03	56.1	12.2	56.5	23.9
206	21.10.2024 19.55.03	56.0	12.1	56.6	23.9
207	21.10.2024 19.56.03	56.0	12.1	56.6	23.9
208	21.10.2024 19.57.03	56.0	12.1	56.6	23.9
209	21.10.2024 19.58.03	56.0	12.2	56.6	23.9
210	21.10.2024 19.59.03	56.0	12.3	56.6	23.9
211	21.10.2024 20.00.03	56.0	12.3	56.5	23.9
212	21.10.2024 20.01.03	56.0	12.3	56.5	23.9
213	21.10.2024 20.02.03	55.9	12.2	56.5	23.9
214	21.10.2024 20.03.03	55.9	12.2	56.4	23.9
215	21.10.2024 20.04.03	55.9	12.1	56.4	23.9
216	21.10.2024 20.05.03	55.9	12.2	56.3	23.9
217	21.10.2024 20.06.03	55.8	12.2	56.4	23.9
218	21.10.2024 20.07.03	55.6	12.0	56.3	23.9
219	21.10.2024 20.08.03	55.6	12.2	56.4	23.9
220	21.10.2024 20.09.03	55.4	12.3	56.4	23.9
221	21.10.2024 20.10.03	55.6	12.1	56.4	23.9
222	21.10.2024 20.11.03	55.6	12.2	56.2	23.9
223	21.10.2024 20.12.03	55.5	12.1	56.2	23.9
224	21.10.2024 20.13.03	55.5	12.1	56.2	23.9
225	21.10.2024 20.14.03	55.6	12.1	56.1	23.9
226	21.10.2024 20.15.03	55.6	12.1	56.1	23.9
227	21.10.2024 20.16.03	55.6	12.1	56.1	23.9
228	21.10.2024 20.17.03	55.6	12.0	56.2	23.9
229	21.10.2024 20.18.03	55.6	12.1	56.1	23.9
230	21.10.2024 20.19.03	55.6	12.2	56.1	23.9
231	21.10.2024 20.20.03	55.6	12.3	56.0	23.9
232	21.10.2024 20.21.03	55.5	12.2	56.0	23.9

ID	Date/time	Lkv [°C]	Ulkolämpötila [°C]	MLP / puukattila meno [°C]	Patteriverkko menovesi [°C]
233	21.10.2024 20.22.03	55.5	12.1	56.0	23.9
234	21.10.2024 20.23.03	55.5	12.1	56.0	23.9
235	21.10.2024 20.24.03	55.5	12.2	56.0	23.8
236	21.10.2024 20.25.03	55.5	12.1	56.0	23.9
237	21.10.2024 20.26.03	55.5	12.2	56.0	23.8
238	21.10.2024 20.27.03	55.4	12.2	55.9	23.9
239	21.10.2024 20.28.03	55.4	12.2	55.9	23.8
240	21.10.2024 20.29.03	55.4	12.2	55.9	23.8
241	21.10.2024 20.30.03	55.3	12.2	56.0	23.8
242	21.10.2024 20.31.03	55.3	12.3	55.9	23.8
243	21.10.2024 20.32.03	55.3	12.2	55.9	23.8
244	21.10.2024 20.33.03	55.3	12.2	55.8	23.8
245	21.10.2024 20.34.03	55.3	12.1	55.8	23.8
246	21.10.2024 20.35.03	55.3	12.0	55.8	23.8
247	21.10.2024 20.36.03	55.3	12.2	55.7	23.8
248	21.10.2024 20.37.03	55.2	12.2	55.7	23.8
249	21.10.2024 20.38.03	55.2	12.2	55.8	23.8
250	21.10.2024 20.39.03	55.2	12.1	55.7	23.8
251	21.10.2024 20.40.03	55.2	12.2	55.7	23.8
252	21.10.2024 20.41.03	55.2	12.1	55.7	23.8
253	21.10.2024 20.42.03	55.1	12.1	55.7	23.8
254	21.10.2024 20.43.03	55.1	12.1	55.7	23.8
255	21.10.2024 20.44.03	55.1	12.2	55.6	23.8
256	21.10.2024 20.45.03	55.1	12.2	55.6	23.8
257	21.10.2024 20.46.03	55.1	12.3	55.6	23.8
258	21.10.2024 20.47.03	55.1	12.1	55.6	23.8
259	21.10.2024 20.48.03	54.9	12.1	55.6	23.8
260	21.10.2024 20.49.03	54.9	12.1	55.5	23.8
261	21.10.2024 20.50.03	54.9	12.2	55.6	23.8
262	21.10.2024 20.51.03	54.8	12.1	55.6	23.8
263	21.10.2024 20.52.03	54.9	12.2	55.5	23.8
264	21.10.2024 20.53.03	54.7	12.1	55.5	23.8
265	21.10.2024 20.54.03	54.8	12.1	55.4	23.8
266	21.10.2024 20.55.03	54.9	12.1	55.3	23.8
267	21.10.2024 20.56.03	54.8	12.1	55.3	23.8
268	21.10.2024 20.57.03	54.8	12.2	55.4	23.8
269	21.10.2024 20.58.03	54.8	12.0	55.4	23.8
270	21.10.2024 20.59.03	54.8	12.0	55.3	23.8
271	21.10.2024 21.00.03	54.8	12.2	55.3	23.8
272	21.10.2024 21.01.03	54.8	12.2	55.3	23.8
273	21.10.2024 21.02.03	54.7	12.2	55.3	23.8
274	21.10.2024 21.03.03	54.7	12.0	55.2	23.8
275	21.10.2024 21.04.03	54.7	12.0	55.2	23.8
276	21.10.2024 21.05.03	54.7	12.3	55.2	23.8

ID	Date/time	Lkv [°C]	Ulkolämpötila [°C]	MLP / puukattila meno [°C]	Patteriverkko menovesi [°C]
277	21.10.2024 21.06.03	54.7	12.3	55.2	23.7
278	21.10.2024 21.07.03	54.6	12.3	55.2	23.8
279	21.10.2024 21.08.03	54.6	12.3	55.2	23.8
280	21.10.2024 21.09.03	54.6	12.1	55.2	23.8
281	21.10.2024 21.10.03	54.6	12.2	55.2	23.8
282	21.10.2024 21.11.03	54.6	12.2	55.1	23.7
283	21.10.2024 21.12.03	54.6	12.2	55.1	23.7
284	21.10.2024 21.13.03	54.6	12.3	55.1	23.7
285	21.10.2024 21.14.03	54.6	12.2	55.1	23.7
286	21.10.2024 21.15.03	54.5	12.2	55.0	23.7
287	21.10.2024 21.16.03	54.5	12.0	55.0	23.7
288	21.10.2024 21.17.03	54.5	12.1	55.0	23.7
289	21.10.2024 21.18.03	54.5	12.1	55.0	23.7
290	21.10.2024 21.19.03	54.4	12.0	55.0	23.7
291	21.10.2024 21.20.03	54.4	12.0	55.0	23.7
292	21.10.2024 21.21.03	54.4	12.0	55.0	23.7
293	21.10.2024 21.22.03	54.4	12.0	55.0	23.7
294	21.10.2024 21.23.03	54.4	12.2	54.9	23.7
295	21.10.2024 21.24.03	54.4	12.1	54.9	23.7
296	21.10.2024 21.25.03	54.3	11.9	54.9	23.7
297	21.10.2024 21.26.03	54.3	12.1	54.8	23.7
298	21.10.2024 21.27.03	54.3	12.0	54.8	23.7
299	21.10.2024 21.28.03	54.3	12.0	54.8	23.7
300	21.10.2024 21.29.03	54.3	12.1	54.8	23.7
301	21.10.2024 21.30.03	54.2	12.2	54.8	23.7
302	21.10.2024 21.31.03	54.2	12.1	54.8	23.7
303	21.10.2024 21.32.03	54.2	12.1	54.8	23.7
304	21.10.2024 21.33.03	54.2	12.1	54.7	23.7
305	21.10.2024 21.34.03	54.2	12.1	54.7	23.7
306	21.10.2024 21.35.03	54.2	12.2	54.7	23.7
307	21.10.2024 21.36.03	54.1	12.2	54.7	23.7
308	21.10.2024 21.37.03	54.1	12.1	54.7	23.7
309	21.10.2024 21.38.03	54.1	12.1	54.6	23.7
310	21.10.2024 21.39.03	54.0	12.3	54.6	23.7
311	21.10.2024 21.40.03	54.0	12.3	54.7	23.7
312	21.10.2024 21.41.03	54.0	12.2	54.6	23.7
313	21.10.2024 21.42.03	54.0	12.1	54.6	23.7
314	21.10.2024 21.43.03	54.0	12.3	54.5	23.7
315	21.10.2024 21.44.03	54.0	12.1	54.5	23.7
316	21.10.2024 21.45.03	54.0	12.2	54.6	23.7
317	21.10.2024 21.46.03	53.9	12.0	54.5	23.7
318	21.10.2024 21.47.03	53.9	12.0	54.5	23.7
319	21.10.2024 21.48.03	53.9	12.0	54.5	23.7
320	21.10.2024 21.49.03	53.9	12.2	54.6	23.7



ID	Date/time	Lkv [°C]	Ulkolämpötila [°C]	MLP / puukattila meno [°C]	Patteriverkko menovesi [°C]
321	21.10.2024 21.50.03	53.9	12.2	54.5	23.7
322	21.10.2024 21.51.03	53.8	12.1	54.5	23.7
323	21.10.2024 21.52.03	53.8	12.1	54.4	23.7
324	21.10.2024 21.53.03	53.8	12.2	54.4	23.7
325	21.10.2024 21.54.03	53.8	12.2	54.4	23.7
326	21.10.2024 21.55.03	53.8	12.2	54.4	23.7
327	21.10.2024 21.56.03	53.8	12.4	54.3	23.7
328	21.10.2024 21.57.03	53.8	12.2	54.3	23.6
329	21.10.2024 21.58.03	53.8	12.1	54.3	23.7
330	21.10.2024 21.59.03	53.7	12.5	54.2	23.6
331	21.10.2024 22.00.03	53.7	12.3	54.3	23.6
332	21.10.2024 22.01.03	53.7	12.3	54.3	23.6
333	21.10.2024 22.02.03	53.6	12.4	54.3	23.7
334	21.10.2024 22.03.03	53.6	12.4	54.2	23.6
335	21.10.2024 22.04.03	53.6	12.2	54.2	23.6
336	21.10.2024 22.05.03	53.6	12.2	54.2	23.6
337	21.10.2024 22.06.03	53.5	12.3	54.2	23.6
338	21.10.2024 22.07.03	53.5	12.2	54.2	23.6
339	21.10.2024 22.08.03	53.5	12.2	54.2	23.6
340	21.10.2024 22.09.03	53.5	12.4	54.1	23.6
341	21.10.2024 22.10.03	53.5	12.2	54.0	23.6
342	21.10.2024 22.11.03	53.5	12.4	54.1	23.6
343	21.10.2024 22.12.03	53.5	12.6	54.0	23.6
344	21.10.2024 22.13.03	53.4	12.4	54.1	23.6
345	21.10.2024 22.14.03	53.4	12.2	54.1	23.6
346	21.10.2024 22.15.03	53.4	12.3	54.0	23.6
347	21.10.2024 22.16.03	53.4	12.5	54.0	23.6
348	21.10.2024 22.17.03	53.4	12.4	53.9	23.6
349	21.10.2024 22.18.03	53.4	12.4	54.0	23.6
350	21.10.2024 22.19.03	53.4	12.3	53.9	23.6
351	21.10.2024 22.20.03	53.4	12.5	53.9	23.6
352	21.10.2024 22.21.03	53.4	12.4	53.9	23.6
353	21.10.2024 22.22.03	53.4	12.3	53.8	23.6
354	21.10.2024 22.23.03	53.3	12.4	53.9	23.6
355	21.10.2024 22.24.03	53.3	12.4	53.8	23.6
356	21.10.2024 22.25.03	53.2	12.6	53.9	23.6
357	21.10.2024 22.26.03	53.1	12.5	53.8	23.6
358	21.10.2024 22.27.03	52.6	12.4	53.8	23.6
359	21.10.2024 22.28.03	52.7	12.4	53.8	23.6
360	21.10.2024 22.29.03	52.6	12.5	53.8	23.6
361	21.10.2024 22.30.03	53.0	12.6	53.7	23.6
362	21.10.2024 22.31.03	53.0	12.4	53.7	23.6
363	21.10.2024 22.32.03	53.1	12.3	53.6	23.6
364	21.10.2024 22.33.03	53.1	12.6	53.5	23.6

ID	Date/time	Lkv [°C]	Ulkolämpötila [°C]	MLP / puukattila meno [°C]	Patteriverkko menovesi [°C]
365	21.10.2024 22.34.03	53.1	12.6	53.6	23.6
366	21.10.2024 22.35.03	53.1	12.3	53.6	23.6
367	21.10.2024 22.36.03	53.0	12.6	53.6	23.6
368	21.10.2024 22.37.03	53.0	12.6	53.6	23.6
369	21.10.2024 22.38.03	53.0	12.4	53.6	23.6
370	21.10.2024 22.39.03	53.0	12.5	53.5	23.6
371	21.10.2024 22.40.03	53.0	12.4	53.5	23.6
372	21.10.2024 22.41.03	52.9	12.7	53.5	23.6
373	21.10.2024 22.42.03	52.9	12.5	53.5	23.6
374	21.10.2024 22.43.03	52.9	12.6	53.5	23.6
375	21.10.2024 22.44.03	52.9	12.6	53.5	23.6
376	21.10.2024 22.45.03	52.9	12.6	53.5	23.5
377	21.10.2024 22.46.03	52.8	12.4	53.4	23.5
378	21.10.2024 22.47.03	52.8	12.5	53.5	23.5
379	21.10.2024 22.48.03	52.9	12.6	53.5	23.5
380	21.10.2024 22.49.03	52.8	12.6	53.4	23.5
381	21.10.2024 22.50.03	52.8	12.4	53.3	23.5
382	21.10.2024 22.51.03	52.8	12.3	53.3	23.5
383	21.10.2024 22.52.03	52.7	12.4	53.4	23.5
384	21.10.2024 22.53.03	52.7	12.5	53.3	23.5
385	21.10.2024 22.54.03	52.7	12.6	53.3	23.5
386	21.10.2024 22.55.03	52.7	12.6	53.9	23.5
387	21.10.2024 22.56.03	52.7	12.6	55.1	23.5
388	21.10.2024 22.57.03	52.8	12.5	56.3	23.5
389	21.10.2024 22.58.03	52.9	12.7	56.8	23.5
390	21.10.2024 22.59.03	53.0	12.6	57.2	23.5
391	21.10.2024 23.00.03	53.1	12.4	57.6	23.5
392	21.10.2024 23.01.03	53.2	12.8	58.0	23.5
393	21.10.2024 23.02.03	53.3	12.6	58.3	23.5
394	21.10.2024 23.03.03	53.4	12.5	58.6	23.5
395	21.10.2024 23.04.03	53.6	12.7	58.8	23.5
396	21.10.2024 23.05.03	53.8	12.6	59.2	23.5
397	21.10.2024 23.06.03	53.9	12.5	59.5	23.5
398	21.10.2024 23.07.03	54.0	12.6	59.7	23.5
399	21.10.2024 23.08.03	54.2	12.5	59.9	23.5
400	21.10.2024 23.09.03	54.3	12.6	60.2	23.5
401	21.10.2024 23.10.03	54.5	12.6	60.3	23.5
402	21.10.2024 23.11.03	54.7	12.5	60.5	23.5
403	21.10.2024 23.12.03	54.8	12.7	60.7	23.5
404	21.10.2024 23.13.03	55.0	12.7	60.9	23.5
405	21.10.2024 23.14.03	55.1	12.5	61.0	23.5
406	21.10.2024 23.15.03	55.3	12.5	61.1	23.5
407	21.10.2024 23.16.03	55.4	12.7	61.2	23.5
408	21.10.2024 23.17.03	55.6	12.7	61.3	23.5

ID	Date/time	Lkv [°C]	Ulkolämpötila [°C]	MLP / puukattila meno [°C]	Patteriverkko menovesi [°C]
409	21.10.2024 23.18.03	55.7	12.7	61.4	23.5
410	21.10.2024 23.19.03	55.8	12.8	61.4	23.5
411	21.10.2024 23.20.03	55.9	12.7	61.5	23.5
412	21.10.2024 23.21.03	56.1	12.5	61.5	23.6
413	21.10.2024 23.22.03	56.2	12.3	61.5	23.6
414	21.10.2024 23.23.03	56.3	12.5	61.6	23.6
415	21.10.2024 23.24.03	56.3	12.4	61.6	23.6
416	21.10.2024 23.25.03	56.5	12.6	61.6	23.6
417	21.10.2024 23.26.03	56.5	12.6	61.7	23.6
418	21.10.2024 23.27.03	56.6	12.6	61.7	23.6
419	21.10.2024 23.28.03	56.7	12.7	61.7	23.6
420	21.10.2024 23.29.03	56.7	12.6	61.8	23.6
421	21.10.2024 23.30.03	56.8	12.5	61.8	23.6
422	21.10.2024 23.31.03	56.8	12.6	61.9	23.6
423	21.10.2024 23.32.03	56.9	12.5	61.8	23.6
424	21.10.2024 23.33.03	57.0	12.5	61.9	23.6
425	21.10.2024 23.34.03	57.1	12.5	61.9	23.6
426	21.10.2024 23.35.03	57.2	12.6	61.9	23.6
427	21.10.2024 23.36.03	57.2	12.5	61.9	23.6
428	21.10.2024 23.37.03	57.2	12.4	61.9	23.6
429	21.10.2024 23.38.03	57.3	12.5	62.0	23.6
430	21.10.2024 23.39.03	57.4	12.8	61.9	23.6
431	21.10.2024 23.40.03	57.4	12.6	62.0	23.6
432	21.10.2024 23.41.03	57.4	12.6	62.0	23.6
433	21.10.2024 23.42.03	57.4	12.7	62.0	23.6
434	21.10.2024 23.43.03	57.2	12.6	62.0	23.7
435	21.10.2024 23.44.03	56.9	12.5	62.0	23.7
436	21.10.2024 23.45.03	56.8	12.6	62.0	23.7
437	21.10.2024 23.46.03	56.6	12.7	62.0	23.7
438	21.10.2024 23.47.03	56.6	12.6	62.0	23.7
439	21.10.2024 23.48.03	56.6	12.6	62.1	23.7
440	21.10.2024 23.49.03	56.7	12.7	62.1	23.7
441	21.10.2024 23.50.03	56.8	12.4	62.1	23.7
442	21.10.2024 23.51.03	56.7	12.3	62.1	23.7
443	21.10.2024 23.52.03	56.5	12.5	62.1	23.7
444	21.10.2024 23.53.03	56.5	12.5	62.1	23.7
445	21.10.2024 23.54.03	56.6	12.3	61.8	23.7
446	21.10.2024 23.55.03	56.6	12.4	61.7	23.7
447	21.10.2024 23.56.03	56.7	12.7	61.4	23.7
448	21.10.2024 23.57.03	56.7	12.5	61.3	23.7
449	21.10.2024 23.58.03	56.7	12.6	61.1	23.7
450	21.10.2024 23.59.03	56.7	12.4	60.9	23.7
451	22.10.2024 0.00.03	56.7	12.5	60.9	23.7
452	22.10.2024 0.01.03	56.7	12.6	60.8	23.7

ID	Date/time	Lkv [°C]	Ulkolämpötila [°C]	MLP / puukattila meno [°C]	Patteriverkko menovesi [°C]
453	22.10.2024 0.02.03	56.7	12.5	60.6	23.7
454	22.10.2024 0.03.03	56.7	12.6	60.5	23.7
455	22.10.2024 0.04.03	56.7	12.6	60.4	23.8
456	22.10.2024 0.05.03	56.7	12.4	60.2	23.8
457	22.10.2024 0.06.03	56.7	12.3	60.2	23.8
458	22.10.2024 0.07.03	56.7	12.6	60.1	23.8
459	22.10.2024 0.08.03	56.7	12.8	60.0	23.8
460	22.10.2024 0.09.03	56.7	12.7	60.0	23.8
461	22.10.2024 0.10.03	56.7	12.7	60.0	23.8
462	22.10.2024 0.11.03	56.7	12.6	60.0	23.8
463	22.10.2024 0.12.03	56.7	12.4	60.0	23.8
464	22.10.2024 0.13.03	56.5	12.5	59.9	23.8
465	22.10.2024 0.14.03	56.6	12.5	59.9	23.8
466	22.10.2024 0.15.03	55.7	12.3	59.9	23.8
467	22.10.2024 0.16.03	56.7	12.5	59.9	23.8
468	22.10.2024 0.17.03	56.8	12.6	59.9	23.8
469	22.10.2024 0.18.03	56.8	12.4	60.0	23.8
470	22.10.2024 0.19.03	56.9	12.7	59.9	23.8
471	22.10.2024 0.20.03	57.0	12.6	60.0	23.8
472	22.10.2024 0.21.03	57.0	12.4	60.0	23.8
473	22.10.2024 0.22.03	56.7	12.4	59.9	23.8
474	22.10.2024 0.23.03	56.7	12.4	59.9	23.8
475	22.10.2024 0.24.03	56.7	12.5	60.0	23.8
476	22.10.2024 0.25.03	56.7	12.3	60.0	23.8
477	22.10.2024 0.26.03	56.6	12.2	60.0	23.8
478	22.10.2024 0.27.03	56.6	12.3	59.9	23.8
479	22.10.2024 0.28.03	56.6	12.3	59.9	23.8
480	22.10.2024 0.29.03	56.6	12.3	59.9	23.8
481	22.10.2024 0.30.03	56.6	12.4	59.8	23.8
482	22.10.2024 0.31.03	56.6	12.6	57.8	23.8
483	22.10.2024 0.32.03	56.5	12.6	56.9	23.8
484	22.10.2024 0.33.03	56.5	12.4	56.8	23.8
485	22.10.2024 0.34.03	56.5	12.6	56.6	23.8
486	22.10.2024 0.35.03	56.4	12.6	56.8	23.8
487	22.10.2024 0.36.03	56.4	12.4	57.1	23.8
488	22.10.2024 0.37.03	56.4	12.6	57.0	23.8
489	22.10.2024 0.38.03	56.4	12.7	57.3	23.8
490	22.10.2024 0.39.03	56.3	12.5	57.3	23.8
491	22.10.2024 0.40.03	56.3	12.6	57.4	23.8
492	22.10.2024 0.41.03	56.6	12.6	57.6	23.8
493	22.10.2024 0.42.03	56.7	12.6	57.6	23.8
494	22.10.2024 0.43.03	56.6	12.6	57.8	23.8
495	22.10.2024 0.44.03	56.6	12.6	57.9	23.8
496	22.10.2024 0.45.03	56.6	12.3	57.9	23.8

ID	Date/time	Lkv [°C]	Ulkolämpötila [°C]	MLP / puukattila meno [°C]	Patteriverkko menovesi [°C]
497	22.10.2024 0.46.03	56.6	12.4	58.0	23.9
498	22.10.2024 0.47.03	56.5	12.5	58.0	23.8
499	22.10.2024 0.48.03	56.5	12.5	58.0	23.9
500	22.10.2024 0.49.03	56.5	12.6	58.1	23.8
501	22.10.2024 0.50.03	56.5	12.7	58.2	23.8
502	22.10.2024 0.51.03	56.4	12.5	58.1	23.9
503	22.10.2024 0.52.03	56.4	12.5	58.1	23.9
504	22.10.2024 0.53.03	56.4	12.6	58.1	23.8
505	22.10.2024 0.54.03	56.4	12.5	58.1	23.9
506	22.10.2024 0.55.03	56.4	12.6	58.1	23.8
507	22.10.2024 0.56.03	56.4	12.7	58.1	23.9
508	22.10.2024 0.57.03	56.6	12.5	58.1	23.9
509	22.10.2024 0.58.03	56.6	12.7	58.1	23.8
510	22.10.2024 0.59.03	56.5	12.5	58.1	23.8
511	22.10.2024 1.00.03	56.5	12.5	58.1	23.8
512	22.10.2024 1.01.03	56.5	12.7	58.1	23.9
513	22.10.2024 1.02.03	56.5	12.7	58.0	23.8
514	22.10.2024 1.03.03	56.5	12.4	58.0	23.8
515	22.10.2024 1.04.03	56.5	12.4	58.0	23.9
516	22.10.2024 1.05.03	56.5	12.8	58.0	23.9
517	22.10.2024 1.06.03	56.4	12.5	58.0	23.9
518	22.10.2024 1.07.03	56.4	12.7	58.0	23.8
519	22.10.2024 1.08.03	56.4	12.8	57.9	23.9
520	22.10.2024 1.09.03	56.4	12.6	57.9	23.9
521	22.10.2024 1.10.03	56.4	12.8	57.9	23.8
522	22.10.2024 1.11.03	56.3	12.6	57.9	23.8
523	22.10.2024 1.12.03	56.3	12.7	57.9	23.8
524	22.10.2024 1.13.03	56.4	12.7	57.9	23.8
525	22.10.2024 1.14.03	56.5	12.5	57.9	23.8
526	22.10.2024 1.15.03	56.5	12.6	57.8	23.8
527	22.10.2024 1.16.03	56.5	12.6	57.8	23.8
528	22.10.2024 1.17.03	56.5	12.5	57.7	23.8
529	22.10.2024 1.18.03	56.4	12.8	57.8	23.8
530	22.10.2024 1.19.03	56.4	12.9	57.7	23.8
531	22.10.2024 1.20.03	56.4	12.7	57.7	23.8
532	22.10.2024 1.21.03	56.4	12.7	57.7	23.8
533	22.10.2024 1.22.03	56.4	12.6	57.7	23.8
534	22.10.2024 1.23.03	56.4	12.5	57.6	23.8
535	22.10.2024 1.24.03	56.3	12.9	57.6	23.8
536	22.10.2024 1.25.03	56.5	12.6	57.7	23.8
537	22.10.2024 1.26.03	56.6	12.6	57.6	23.8
538	22.10.2024 1.27.03	56.6	12.7	57.6	23.8
539	22.10.2024 1.28.03	56.5	12.8	57.5	23.8
540	22.10.2024 1.29.03	56.5	12.8	57.5	23.8

ID	Date/time	Lkv [°C]	Ulkolämpötila [°C]	MLP / puukattila meno [°C]	Patteriverkko menovesi [°C]
541	22.10.2024 1.30.03	56.5	12.7	57.5	23.8
542	22.10.2024 1.31.03	56.5	12.7	57.5	23.8
543	22.10.2024 1.32.03	56.5	12.6	57.5	23.8
544	22.10.2024 1.33.03	56.4	12.5	57.5	23.8
545	22.10.2024 1.34.03	56.4	12.5	57.5	23.8
546	22.10.2024 1.35.03	56.4	12.9	57.4	23.8
547	22.10.2024 1.36.03	56.4	12.7	57.5	23.8
548	22.10.2024 1.37.03	56.4	12.3	57.3	23.8
549	22.10.2024 1.38.03	56.4	12.5	57.4	23.8
550	22.10.2024 1.39.03	56.3	12.2	57.3	23.8
551	22.10.2024 1.40.03	56.3	12.4	57.3	23.8
552	22.10.2024 1.41.03	56.3	12.2	57.3	23.8
553	22.10.2024 1.42.03	56.3	12.0	57.3	23.8
554	22.10.2024 1.43.03	56.5	12.1	57.2	23.8
555	22.10.2024 1.44.03	56.5	12.3	57.2	23.8
556	22.10.2024 1.45.03	56.5	12.5	57.2	23.8
557	22.10.2024 1.46.03	56.4	12.7	57.2	23.8
558	22.10.2024 1.47.03	56.4	12.2	57.2	23.8
559	22.10.2024 1.48.03	56.4	12.3	57.2	23.8
560	22.10.2024 1.49.03	56.4	12.4	57.1	23.8
561	22.10.2024 1.50.03	56.4	12.4	57.1	23.8
562	22.10.2024 1.51.03	56.3	12.2	57.1	23.8
563	22.10.2024 1.52.03	56.3	12.5	57.1	23.8
564	22.10.2024 1.53.03	56.4	12.3	57.1	23.8
565	22.10.2024 1.54.03	56.4	12.4	57.0	23.8
566	22.10.2024 1.55.03	56.4	12.2	57.0	23.8
567	22.10.2024 1.56.03	56.4	12.2	57.0	23.8
568	22.10.2024 1.57.03	56.4	12.3	57.0	23.8
569	22.10.2024 1.58.03	56.3	12.3	56.9	23.8
570	22.10.2024 1.59.03	56.3	12.2	57.0	23.8
571	22.10.2024 2.00.03	56.3	12.4	57.0	23.8
572	22.10.2024 2.01.03	56.3	12.5	56.9	23.8
573	22.10.2024 2.02.03	56.3	12.2	56.8	23.8
574	22.10.2024 2.03.03	56.3	12.4	56.8	23.8
575	22.10.2024 2.04.03	56.3	12.3	56.9	23.8
576	22.10.2024 2.05.03	56.3	12.5	56.9	23.8
577	22.10.2024 2.06.03	56.3	12.4	56.9	23.8
578	22.10.2024 2.07.03	56.2	12.4	56.8	23.8
579	22.10.2024 2.08.03	56.2	12.3	56.8	23.8
580	22.10.2024 2.09.03	56.2	12.3	56.8	23.8
581	22.10.2024 2.10.03	56.2	12.4	56.8	23.8
582	22.10.2024 2.11.03	56.2	12.4	56.7	23.8
583	22.10.2024 2.12.03	56.2	12.5	56.7	23.8
584	22.10.2024 2.13.03	56.1	12.3	56.6	23.8

ID	Date/time	Lkv [°C]	Ulkolämpötila [°C]	MLP / puukattila meno [°C]	Patteriverkko menovesi [°C]
585	22.10.2024 2.14.03	56.1	12.5	56.6	23.8
586	22.10.2024 2.15.03	56.1	12.3	56.6	23.8
587	22.10.2024 2.16.03	56.1	12.2	56.6	23.8
588	22.10.2024 2.17.03	56.1	12.5	56.6	23.8
589	22.10.2024 2.18.03	56.0	12.5	56.6	23.8
590	22.10.2024 2.19.03	56.0	12.5	56.5	23.8
591	22.10.2024 2.20.03	56.0	12.6	56.6	23.8
592	22.10.2024 2.21.03	56.0	12.5	56.5	23.8
593	22.10.2024 2.22.03	56.0	12.7	56.5	23.8
594	22.10.2024 2.23.03	56.0	12.5	56.5	23.8
595	22.10.2024 2.24.03	55.9	12.5	56.4	23.7
596	22.10.2024 2.25.03	55.9	12.3	56.4	23.8
597	22.10.2024 2.26.03	55.9	12.5	56.4	23.7
598	22.10.2024 2.27.03	55.9	12.6	56.4	23.8
599	22.10.2024 2.28.03	55.8	12.4	56.4	23.7
600	22.10.2024 2.29.03	55.8	12.6	56.4	23.7
601	22.10.2024 2.30.03	55.8	12.2	56.4	23.7
602	22.10.2024 2.31.03	55.8	12.6	56.4	23.7
603	22.10.2024 2.32.03	55.7	12.4	56.3	23.7
604	22.10.2024 2.33.03	55.7	12.1	56.3	23.7
605	22.10.2024 2.34.03	55.7	12.5	56.3	23.7
606	22.10.2024 2.35.03	55.7	12.3	56.3	23.7
607	22.10.2024 2.36.03	55.7	12.5	56.3	23.7
608	22.10.2024 2.37.03	55.7	12.4	56.2	23.7
609	22.10.2024 2.38.03	55.7	12.5	56.2	23.7
610	22.10.2024 2.39.03	55.6	12.5	56.2	23.7
611	22.10.2024 2.40.03	55.6	12.7	56.2	23.7
612	22.10.2024 2.41.03	55.6	12.6	56.2	23.7
613	22.10.2024 2.42.03	55.6	12.3	56.1	23.7
614	22.10.2024 2.43.03	55.6	12.4	56.1	23.7
615	22.10.2024 2.44.03	55.5	12.4	56.1	23.7
616	22.10.2024 2.45.03	55.5	12.3	56.1	23.7
617	22.10.2024 2.46.03	55.5	12.4	56.0	23.7
618	22.10.2024 2.47.03	55.5	12.5	56.0	23.7
619	22.10.2024 2.48.03	55.5	12.2	56.0	23.7
620	22.10.2024 2.49.03	55.4	12.6	56.0	23.7
621	22.10.2024 2.50.03	55.4	12.3	56.0	23.7
622	22.10.2024 2.51.03	55.4	12.4	55.9	23.7
623	22.10.2024 2.52.03	55.4	12.2	55.9	23.7
624	22.10.2024 2.53.03	55.4	12.5	55.9	23.7
625	22.10.2024 2.54.03	55.4	12.3	55.9	23.7
626	22.10.2024 2.55.03	55.3	12.3	55.8	23.7
627	22.10.2024 2.56.03	55.3	12.2	55.9	23.7
628	22.10.2024 2.57.03	55.3	12.0	55.9	23.7

ID	Date/time	Lkv [°C]	Ulkolämpötila [°C]	MLP / puukattila meno [°C]	Patteriverkko menovesi [°C]
629	22.10.2024 2.58.03	55.3	12.1	55.8	23.7
630	22.10.2024 2.59.03	55.2	12.0	55.8	23.7
631	22.10.2024 3.00.03	55.2	12.1	55.9	23.7
632	22.10.2024 3.01.03	55.2	12.1	55.8	23.7
633	22.10.2024 3.02.03	55.2	12.4	55.8	23.7
634	22.10.2024 3.03.03	55.2	12.2	55.7	23.7
635	22.10.2024 3.04.03	55.2	12.1	55.7	23.7
636	22.10.2024 3.05.03	55.2	12.3	55.7	23.7
637	22.10.2024 3.06.03	55.1	12.3	55.7	23.7
638	22.10.2024 3.07.03	55.1	12.1	55.6	23.7
639	22.10.2024 3.08.03	55.1	12.1	55.6	23.7
640	22.10.2024 3.09.03	55.1	12.0	55.6	23.7
641	22.10.2024 3.10.03	55.0	12.2	55.6	23.7
642	22.10.2024 3.11.03	55.0	12.2	55.7	23.7
643	22.10.2024 3.12.03	55.0	12.3	55.6	23.7
644	22.10.2024 3.13.03	55.0	12.2	55.5	23.7
645	22.10.2024 3.14.03	55.0	12.1	55.5	23.7
646	22.10.2024 3.15.03	55.0	11.8	55.5	23.7
647	22.10.2024 3.16.03	55.0	12.0	55.5	23.7
648	22.10.2024 3.17.03	55.0	12.3	55.5	23.7
649	22.10.2024 3.18.03	54.9	12.2	55.5	23.7
650	22.10.2024 3.19.03	54.9	12.0	55.5	23.7
651	22.10.2024 3.20.03	54.8	12.0	55.4	23.7
652	22.10.2024 3.21.03	54.8	11.9	55.4	23.7
653	22.10.2024 3.22.03	54.8	12.0	55.4	23.7
654	22.10.2024 3.23.03	54.8	12.1	55.4	23.7
655	22.10.2024 3.24.03	53.9	11.8	55.3	23.7
656	22.10.2024 3.25.03	48.4	12.1	55.3	23.7
657	22.10.2024 3.26.03	49.0	12.0	55.3	23.7
658	22.10.2024 3.27.03	52.8	12.0	55.2	23.7
659	22.10.2024 3.28.03	54.7	12.0	55.1	23.7
660	22.10.2024 3.29.03	54.7	12.0	55.2	23.7
661	22.10.2024 3.30.03	54.6	12.0	55.3	23.7
662	22.10.2024 3.31.03	54.6	12.1	55.3	23.7
663	22.10.2024 3.32.03	54.6	11.9	55.3	23.7
664	22.10.2024 3.33.03	54.6	12.0	55.2	23.7
665	22.10.2024 3.34.03	54.6	12.2	55.2	23.7
666	22.10.2024 3.35.03	54.6	12.2	55.2	23.7
667	22.10.2024 3.36.03	54.6	12.1	55.1	23.7
668	22.10.2024 3.37.03	54.6	12.0	55.1	23.7
669	22.10.2024 3.38.03	54.6	11.9	55.1	23.7
670	22.10.2024 3.39.03	54.5	12.3	55.1	23.6
671	22.10.2024 3.40.03	54.5	12.0	55.1	23.7
672	22.10.2024 3.41.03	54.4	12.1	55.1	23.6



ID	Date/time	Lkv [°C]	Ulkolämpötila [°C]	MLP / puukattila meno [°C]	Patteriverkko menovesi [°C]
673	22.10.2024 3.42.03	54.4	12.1	55.0	23.6
674	22.10.2024 3.43.03	54.4	12.0	55.1	23.6
675	22.10.2024 3.44.03	54.3	11.9	55.1	23.6
676	22.10.2024 3.45.03	54.3	12.1	55.0	23.6
677	22.10.2024 3.46.03	54.3	12.0	55.0	23.7
678	22.10.2024 3.47.03	54.3	11.9	55.0	23.6
679	22.10.2024 3.48.03	54.3	11.9	55.0	23.6
680	22.10.2024 3.49.03	54.3	11.8	54.9	23.6
681	22.10.2024 3.50.03	54.3	11.8	55.0	23.6
682	22.10.2024 3.51.03	54.3	12.1	54.9	23.6
683	22.10.2024 3.52.03	54.2	11.8	54.9	23.6
684	22.10.2024 3.53.03	54.2	11.8	54.9	23.6
685	22.10.2024 3.54.03	54.2	11.9	54.8	23.6
686	22.10.2024 3.55.03	54.2	12.1	54.7	23.6
687	22.10.2024 3.56.03	54.2	12.1	54.7	23.6
688	22.10.2024 3.57.03	54.2	11.9	54.7	23.6
689	22.10.2024 3.58.03	54.2	11.9	54.7	23.6
690	22.10.2024 3.59.03	54.2	12.0	54.7	23.6
691	22.10.2024 4.00.03	54.1	11.8	54.7	23.6
692	22.10.2024 4.01.03	54.1	12.2	54.7	23.6
693	22.10.2024 4.02.03	54.1	12.1	54.6	23.6
694	22.10.2024 4.03.03	54.1	11.8	54.7	23.6
695	22.10.2024 4.04.03	54.1	12.0	54.6	23.6
696	22.10.2024 4.05.03	54.1	11.9	54.6	23.6
697	22.10.2024 4.06.03	54.0	11.9	54.6	23.6
698	22.10.2024 4.07.03	54.0	11.9	54.5	23.6
699	22.10.2024 4.08.03	54.0	12.2	54.6	23.6
700	22.10.2024 4.09.03	54.0	12.0	54.6	23.6
701	22.10.2024 4.10.03	54.0	12.1	54.6	23.6
702	22.10.2024 4.11.03	53.9	12.1	54.5	23.6
703	22.10.2024 4.12.03	53.9	12.0	54.5	23.6
704	22.10.2024 4.13.03	53.9	12.0	54.5	23.6
705	22.10.2024 4.14.03	53.9	12.0	54.5	23.6
706	22.10.2024 4.15.03	53.8	11.8	54.5	23.6
707	22.10.2024 4.16.03	53.9	11.9	54.5	23.6
708	22.10.2024 4.17.03	53.8	12.1	54.5	23.6
709	22.10.2024 4.18.03	53.8	11.8	54.4	23.6
710	22.10.2024 4.19.03	53.8	12.0	54.3	23.6
711	22.10.2024 4.20.03	53.8	12.1	54.4	23.6
712	22.10.2024 4.21.03	53.8	11.7	54.3	23.6
713	22.10.2024 4.22.03	53.8	11.7	54.3	23.6
714	22.10.2024 4.23.03	53.7	11.9	54.3	23.6
715	22.10.2024 4.24.03	53.7	11.8	54.3	23.6
716	22.10.2024 4.25.03	53.7	11.8	54.3	23.6

ID	Date/time	Lkv [°C]	Ulkolämpötila [°C]	MLP / puukattila meno [°C]	Patteriverkko menovesi [°C]
717	22.10.2024 4.26.03	53.6	11.8	54.2	23.6
718	22.10.2024 4.27.03	53.7	11.8	54.2	23.6
719	22.10.2024 4.28.03	53.6	11.8	54.2	23.6
720	22.10.2024 4.29.03	53.6	11.9	54.2	23.6
721	22.10.2024 4.30.03	53.6	11.8	54.2	23.6
722	22.10.2024 4.31.03	53.6	11.8	54.1	23.6
723	22.10.2024 4.32.03	53.6	11.9	54.2	23.6
724	22.10.2024 4.33.03	53.5	12.0	54.2	23.6
725	22.10.2024 4.34.03	53.5	12.0	54.2	23.6
726	22.10.2024 4.35.03	53.5	11.8	54.1	23.6
727	22.10.2024 4.36.03	53.5	11.8	54.0	23.6
728	22.10.2024 4.37.03	53.5	11.8	54.0	23.6
729	22.10.2024 4.38.03	53.5	11.8	54.0	23.6
730	22.10.2024 4.39.03	53.4	11.8	54.1	23.6
731	22.10.2024 4.40.03	53.4	11.8	54.0	23.6
732	22.10.2024 4.41.03	53.4	11.8	54.1	23.5
733	22.10.2024 4.42.03	53.4	11.8	54.0	23.6
734	22.10.2024 4.43.03	53.4	11.9	53.9	23.6
735	22.10.2024 4.44.03	53.4	12.0	54.0	23.6
736	22.10.2024 4.45.03	53.3	11.9	54.0	23.6
737	22.10.2024 4.46.03	53.3	11.8	53.9	23.5
738	22.10.2024 4.47.03	53.3	11.7	53.9	23.6
739	22.10.2024 4.48.03	53.3	11.9	53.8	23.5
740	22.10.2024 4.49.03	53.3	11.8	53.8	23.5
741	22.10.2024 4.50.03	53.2	11.9	53.8	23.5
742	22.10.2024 4.51.03	53.2	11.8	53.8	23.5
743	22.10.2024 4.52.03	53.2	12.0	53.8	23.5
744	22.10.2024 4.53.03	53.2	11.8	53.8	23.5
745	22.10.2024 4.54.03	53.2	11.9	53.8	23.5
746	22.10.2024 4.55.03	53.2	11.7	53.8	23.5
747	22.10.2024 4.56.03	53.1	11.7	53.7	23.5
748	22.10.2024 4.57.03	53.1	11.7	53.8	23.5
749	22.10.2024 4.58.03	53.1	11.7	53.7	23.5
750	22.10.2024 4.59.03	53.1	11.7	53.7	23.5
751	22.10.2024 5.00.03	53.1	11.6	53.6	23.5
752	22.10.2024 5.01.03	53.1	11.7	53.6	23.5
753	22.10.2024 5.02.03	53.1	11.7	53.6	23.5
754	22.10.2024 5.03.03	53.1	11.4	53.6	23.5
755	22.10.2024 5.04.03	53.0	11.4	53.6	23.7
756	22.10.2024 5.05.03	53.0	11.6	53.6	23.7
757	22.10.2024 5.06.03	53.0	11.6	53.6	23.7
758	22.10.2024 5.07.03	53.0	11.5	53.5	23.9
759	22.10.2024 5.08.03	52.9	11.6	53.5	24.1
760	22.10.2024 5.09.03	53.0	11.8	53.5	24.1

ID	Date/time	Lkv [°C]	Ulkolämpötila [°C]	MLP / puukattila meno [°C]	Patteriverkko menovesi [°C]
761	22.10.2024 5.10.03	52.9	11.5	53.5	24.2
762	22.10.2024 5.11.03	52.9	11.5	53.5	24.2
763	22.10.2024 5.12.03	52.9	11.7	53.3	24.2
764	22.10.2024 5.13.03	52.9	11.6	53.4	24.2
765	22.10.2024 5.14.03	52.9	11.7	53.3	24.2
766	22.10.2024 5.15.03	52.8	11.5	53.3	24.2
767	22.10.2024 5.16.03	52.8	11.6	53.3	24.2
768	22.10.2024 5.17.03	52.8	11.5	53.2	24.2
769	22.10.2024 5.18.03	52.8	11.6	53.2	24.3
770	22.10.2024 5.19.03	52.8	11.6	53.1	24.3
771	22.10.2024 5.20.03	52.7	11.7	53.2	24.3
772	22.10.2024 5.21.03	52.7	11.4	53.2	24.3
773	22.10.2024 5.22.03	52.6	11.7	53.1	24.4
774	22.10.2024 5.23.03	52.6	11.6	53.1	24.4
775	22.10.2024 5.24.03	52.6	11.4	53.1	24.4
776	22.10.2024 5.25.03	52.6	11.4	53.0	24.4
777	22.10.2024 5.26.03	52.6	11.4	53.0	24.4
778	22.10.2024 5.27.03	52.6	11.3	52.9	24.4
779	22.10.2024 5.28.03	52.6	11.4	52.9	24.4
780	22.10.2024 5.29.03	52.6	11.6	52.9	24.5
781	22.10.2024 5.30.03	52.6	11.4	53.0	24.5
782	22.10.2024 5.31.03	52.5	11.4	53.0	24.4
783	22.10.2024 5.32.03	52.5	11.5	53.0	24.3
784	22.10.2024 5.33.03	52.5	11.4	52.9	24.3
785	22.10.2024 5.34.03	52.5	11.4	53.0	24.3
786	22.10.2024 5.35.03	52.4	11.2	52.9	24.3
787	22.10.2024 5.36.03	52.4	11.3	52.9	24.3
788	22.10.2024 5.37.03	52.4	11.3	52.8	24.3
789	22.10.2024 5.38.03	52.4	11.1	52.9	24.3
790	22.10.2024 5.39.03	52.4	11.1	52.8	24.3
791	22.10.2024 5.40.03	52.3	11.1	52.8	24.3
792	22.10.2024 5.41.03	52.3	11.2	52.8	24.4
793	22.10.2024 5.42.03	52.3	11.2	52.8	24.3
794	22.10.2024 5.43.03	52.3	11.0	52.7	24.3
795	22.10.2024 5.44.03	52.3	11.0	52.7	24.3
796	22.10.2024 5.45.03	52.3	11.1	52.7	24.3
797	22.10.2024 5.46.03	52.2	11.0	52.7	24.3
798	22.10.2024 5.47.03	52.2	11.0	52.7	24.3
799	22.10.2024 5.48.03	52.2	10.9	52.7	24.3
800	22.10.2024 5.49.03	52.2	11.1	52.7	24.3
801	22.10.2024 5.50.03	52.2	10.8	52.7	24.3
802	22.10.2024 5.51.03	52.1	10.9	52.7	24.3
803	22.10.2024 5.52.03	52.1	10.7	52.6	24.3
804	22.10.2024 5.53.03	52.1	10.8	52.6	24.4

ID	Date/time	Lkv [°C]	Ulkolämpötila [°C]	MLP / puukattila meno [°C]	Patteriverkko menovesi [°C]
805	22.10.2024 5.54.03	52.1	10.7	52.6	24.4
806	22.10.2024 5.55.03	52.1	11.0	52.5	24.4
807	22.10.2024 5.56.03	52.1	10.8	52.5	24.4
808	22.10.2024 5.57.03	52.0	10.4	52.6	24.4
809	22.10.2024 5.58.03	52.0	10.8	52.6	24.7
810	22.10.2024 5.59.03	52.0	10.8	52.5	24.8
811	22.10.2024 6.00.03	52.0	10.7	52.5	24.9
812	22.10.2024 6.01.03	52.0	10.6	52.4	24.9
813	22.10.2024 6.02.03	52.0	10.9	52.4	25.2
814	22.10.2024 6.03.03	52.0	10.7	52.4	25.3
815	22.10.2024 6.04.03	51.9	10.7	52.3	25.4
816	22.10.2024 6.05.03	51.9	10.4	52.3	25.4
817	22.10.2024 6.06.03	51.9	10.4	52.3	25.4
818	22.10.2024 6.07.03	51.8	10.3	52.2	25.4
819	22.10.2024 6.08.03	51.8	10.4	52.2	25.4
820	22.10.2024 6.09.03	51.8	10.4	52.1	25.4
821	22.10.2024 6.10.03	51.8	10.7	52.1	25.4
822	22.10.2024 6.11.03	51.8	10.4	52.0	25.5
823	22.10.2024 6.12.03	51.8	10.5	52.0	25.5
824	22.10.2024 6.13.03	51.8	10.5	52.0	25.5
825	22.10.2024 6.14.03	51.7	10.3	52.0	25.6
826	22.10.2024 6.15.03	51.7	10.4	52.0	25.6
827	22.10.2024 6.16.03	51.7	10.3	52.0	25.6
828	22.10.2024 6.17.03	51.7	10.4	51.9	25.7
829	22.10.2024 6.18.03	51.7	10.1	51.9	25.7
830	22.10.2024 6.19.03	51.6	10.3	51.9	25.7
831	22.10.2024 6.20.03	51.6	10.2	51.8	25.7
832	22.10.2024 6.21.03	51.6	10.3	51.8	25.7
833	22.10.2024 6.22.03	51.6	10.2	51.7	25.8
834	22.10.2024 6.23.03	51.6	10.3	51.8	25.8
835	22.10.2024 6.24.03	51.5	10.0	51.8	25.8
836	22.10.2024 6.25.03	51.5	10.1	51.7	25.8
837	22.10.2024 6.26.03	51.5	10.2	51.7	25.8
838	22.10.2024 6.27.03	51.5	9.7	51.7	25.9
839	22.10.2024 6.28.03	51.5	9.7	51.8	25.9
840	22.10.2024 6.29.03	51.5	9.6	51.8	25.9
841	22.10.2024 6.30.03	51.4	9.4	51.6	25.9
842	22.10.2024 6.31.03	51.4	9.7	51.6	25.9
843	22.10.2024 6.32.03	51.3	9.7	51.5	26.0
844	22.10.2024 6.33.03	51.1	9.6	51.6	26.0
845	22.10.2024 6.34.03	50.9	9.7	51.6	26.0
846	22.10.2024 6.35.03	50.7	9.6	51.7	26.0
847	22.10.2024 6.36.03	50.9	9.6	51.6	26.0
848	22.10.2024 6.37.03	51.2	9.9	52.1	26.1

ID	Date/time	Lkv [°C]	Ulkolämpötila [°C]	MLP / puukattila meno [°C]	Patteriverkko menovesi [°C]
849	22.10.2024 6.38.03	51.3	9.7	53.4	26.1
850	22.10.2024 6.39.03	51.3	9.6	54.4	26.1
851	22.10.2024 6.40.03	51.4	9.6	55.0	26.1
852	22.10.2024 6.41.03	51.6	9.8	55.3	26.1
853	22.10.2024 6.42.03	51.7	9.8	55.8	26.1
854	22.10.2024 6.43.03	51.7	9.6	56.2	26.1
855	22.10.2024 6.44.03	51.8	9.7	56.5	26.2
856	22.10.2024 6.45.03	52.0	9.6	56.8	26.2
857	22.10.2024 6.46.03	52.1	9.7	57.2	26.2
858	22.10.2024 6.47.03	52.2	9.6	57.6	26.2
859	22.10.2024 6.48.03	52.4	9.5	58.0	26.3
860	22.10.2024 6.49.03	52.5	9.6	58.4	26.3
861	22.10.2024 6.50.03	52.7	9.4	58.8	26.3
862	22.10.2024 6.51.03	52.9	9.4	59.1	26.3
863	22.10.2024 6.52.03	53.0	9.3	59.5	26.4
864	22.10.2024 6.53.03	53.2	9.4	59.7	26.4
865	22.10.2024 6.54.03	53.4	9.3	60.0	26.4
866	22.10.2024 6.55.03	53.6	9.5	60.3	26.5
867	22.10.2024 6.56.03	53.8	9.4	60.5	26.5
868	22.10.2024 6.57.03	54.0	9.2	60.7	26.5
869	22.10.2024 6.58.03	54.2	9.4	60.8	26.5
870	22.10.2024 6.59.03	54.4	9.7	60.9	26.6
871	22.10.2024 7.00.03	54.6	9.6	60.9	26.6
872	22.10.2024 7.01.03	54.7	9.8	61.0	26.7
873	22.10.2024 7.02.03	54.9	9.4	61.1	26.7
874	22.10.2024 7.03.03	55.0	9.4	61.1	26.7
875	22.10.2024 7.04.03	55.2	9.1	61.1	26.7
876	22.10.2024 7.05.03	55.3	9.3	61.1	26.8
877	22.10.2024 7.06.03	55.4	9.1	61.1	26.8
878	22.10.2024 7.07.03	55.6	9.3	61.1	26.8
879	22.10.2024 7.08.03	55.7	9.4	61.1	26.8
880	22.10.2024 7.09.03	55.7	9.5	61.1	26.9
881	22.10.2024 7.10.03	55.8	9.6	61.1	26.9
882	22.10.2024 7.11.03	55.8	9.5	61.1	26.9
883	22.10.2024 7.12.03	56.0	9.4	61.1	26.9
884	22.10.2024 7.13.03	56.0	9.6	61.0	27.0
885	22.10.2024 7.14.03	56.0	9.4	61.0	27.0
886	22.10.2024 7.15.03	56.1	9.0	61.0	27.0
887	22.10.2024 7.16.03	56.2	9.2	60.9	27.0
888	22.10.2024 7.17.03	56.2	9.4	60.9	27.0
889	22.10.2024 7.18.03	56.3	9.4	60.9	27.1
890	22.10.2024 7.19.03	56.3	9.4	60.9	27.1
891	22.10.2024 7.20.03	56.4	9.6	60.9	26.9
892	22.10.2024 7.21.03	56.4	9.5	60.9	26.8

ID	Date/time	Lkv [°C]	Ulkolämpötila [°C]	MLP / puukattila meno [°C]	Patteriverkko menovesi [°C]
893	22.10.2024 7.22.03	56.4	9.4	60.9	26.8
894	22.10.2024 7.23.03	56.5	9.2	60.9	26.8
895	22.10.2024 7.24.03	56.5	9.1	60.9	26.8
896	22.10.2024 7.25.03	56.6	8.9	60.9	26.9
897	22.10.2024 7.26.03	56.6	9.2	60.9	26.9
898	22.10.2024 7.27.03	56.7	8.9	60.9	26.9
899	22.10.2024 7.28.03	56.7	9.4	60.9	26.9
900	22.10.2024 7.29.03	56.6	9.3	60.9	26.9
901	22.10.2024 7.30.03	56.7	8.8	60.9	26.9
902	22.10.2024 7.31.03	56.7	8.7	60.9	26.9
903	22.10.2024 7.32.03	56.8	8.6	61.0	26.9
904	22.10.2024 7.33.03	56.9	8.7	61.0	26.9
905	22.10.2024 7.34.03	56.9	9.0	61.0	26.9
906	22.10.2024 7.35.03	57.0	9.0	61.0	26.9
907	22.10.2024 7.36.03	57.0	9.1	61.0	27.0
908	22.10.2024 7.37.03	57.0	9.1	61.0	27.0
909	22.10.2024 7.38.03	57.1	9.0	61.0	27.0
910	22.10.2024 7.39.03	57.1	9.0	61.0	27.0
911	22.10.2024 7.40.03	57.2	9.1	61.0	27.0
912	22.10.2024 7.41.03	57.3	9.1	61.0	27.0
913	22.10.2024 7.42.03	57.3	8.9	61.0	27.0
914	22.10.2024 7.43.03	57.4	8.9	61.0	27.0
915	22.10.2024 7.44.03	57.3	9.1	61.0	27.0
916	22.10.2024 7.45.03	57.1	8.9	61.0	27.0
917	22.10.2024 7.46.03	56.9	9.0	61.1	27.0
918	22.10.2024 7.47.03	56.7	9.1	61.1	27.0
919	22.10.2024 7.48.03	56.5	9.0	61.1	27.0
920	22.10.2024 7.49.03	56.6	9.0	61.1	27.0
921	22.10.2024 7.50.03	56.6	8.9	61.1	27.0
922	22.10.2024 7.51.03	56.6	8.7	61.2	27.0
923	22.10.2024 7.52.03	56.7	8.8	61.3	27.0
924	22.10.2024 7.53.03	56.7	8.8	61.3	27.1
925	22.10.2024 7.54.03	56.6	9.0	61.3	27.1
926	22.10.2024 7.55.03	56.6	9.0	61.4	27.1
927	22.10.2024 7.56.03	56.6	8.6	61.5	27.1
928	22.10.2024 7.57.03	56.6	8.8	61.6	27.1
929	22.10.2024 7.58.03	56.7	8.9	61.7	27.1
930	22.10.2024 7.59.03	56.6	9.0	61.8	27.1
931	22.10.2024 8.00.03	56.0	9.0	61.8	27.1
932	22.10.2024 8.01.03	56.8	8.9	62.0	27.1
933	22.10.2024 8.02.03	57.0	8.6	62.1	27.1
934	22.10.2024 8.03.03	56.9	8.7	62.2	27.1
935	22.10.2024 8.04.03	56.9	8.8	62.3	27.1
936	22.10.2024 8.05.03	56.8	8.7	62.5	27.1

ID	Date/time	Lkv [°C]	Ulkolämpötila [°C]	MLP / puukattila meno [°C]	Patteriverkko menovesi [°C]
937	22.10.2024 8.06.03	56.4	8.5	62.6	27.1
938	22.10.2024 8.07.03	56.5	8.4	62.7	27.1
939	22.10.2024 8.08.03	56.5	8.4	62.9	27.1
940	22.10.2024 8.09.03	56.6	8.5	63.0	27.2
941	22.10.2024 8.10.03	56.7	8.7	62.8	27.2
942	22.10.2024 8.11.03	56.7	8.8	62.7	27.2
943	22.10.2024 8.12.03	56.7	8.6	62.5	27.2
944	22.10.2024 8.13.03	56.6	8.7	62.3	27.2
945	22.10.2024 8.14.03	56.6	8.8	62.1	27.2
946	22.10.2024 8.15.03	56.6	8.8	62.0	27.2
947	22.10.2024 8.16.03	56.6	8.8	61.8	27.2
948	22.10.2024 8.17.03	56.5	8.7	61.6	27.2
949	22.10.2024 8.18.03	56.4	8.7	61.5	27.2
950	22.10.2024 8.19.03	56.5	8.4	61.2	27.2
951	22.10.2024 8.20.03	56.5	8.5	61.1	27.2
952	22.10.2024 8.21.03	56.5	8.5	60.9	27.2
953	22.10.2024 8.22.03	56.5	8.7	60.1	27.2
954	22.10.2024 8.23.03	56.4	8.6	57.6	27.2
955	22.10.2024 8.24.03	56.4	8.6	56.9	27.2
956	22.10.2024 8.25.03	56.3	8.6	56.6	27.2
957	22.10.2024 8.26.03	56.4	8.3	56.6	27.2
958	22.10.2024 8.27.03	56.6	8.6	56.7	27.2
959	22.10.2024 8.28.03	56.6	8.6	56.9	27.2
960	22.10.2024 8.29.03	56.5	8.8	56.8	27.3
961	22.10.2024 8.30.03	56.5	8.6	56.9	27.2
962	22.10.2024 8.31.03	56.5	8.4	56.9	27.2
963	22.10.2024 8.32.03	56.4	8.5	57.0	27.2
964	22.10.2024 8.33.03	56.4	8.6	57.1	27.2
965	22.10.2024 8.34.03	56.4	8.7	57.1	27.2
966	22.10.2024 8.35.03	56.3	8.7	57.1	27.2
967	22.10.2024 8.36.03	56.4	8.6	57.1	27.2
968	22.10.2024 8.37.03	56.5	8.5	57.2	27.3
969	22.10.2024 8.38.03	56.5	8.5	57.2	27.2
970	22.10.2024 8.39.03	56.4	8.8	57.2	27.2
971	22.10.2024 8.40.03	56.4	8.6	57.3	27.3
972	22.10.2024 8.41.03	56.4	8.6	57.3	27.2
973	22.10.2024 8.42.03	56.3	8.6	57.3	27.2
974	22.10.2024 8.43.03	56.6	8.9	57.4	27.2
975	22.10.2024 8.44.03	56.6	8.6	57.5	27.2
976	22.10.2024 8.45.03	56.5	8.1	57.6	27.2
977	22.10.2024 8.46.03	56.5	8.4	57.6	27.2
978	22.10.2024 8.47.03	56.5	8.5	57.6	27.2
979	22.10.2024 8.48.03	56.5	8.6	57.7	27.2
980	22.10.2024 8.49.03	56.4	8.7	57.7	27.2

ID	Date/time	Lkv [°C]	Ulkolämpötila [°C]	MLP / puukattila meno [°C]	Patteriverkko menovesi [°C]
981	22.10.2024 8.50.03	56.4	8.8	57.7	27.2
982	22.10.2024 8.51.03	56.4	8.5	57.7	27.2
983	22.10.2024 8.52.03	56.2	8.4	57.8	27.2
984	22.10.2024 8.53.03	56.5	8.6	57.8	27.2
985	22.10.2024 8.54.03	56.6	8.8	57.8	27.2
986	22.10.2024 8.55.03	56.5	8.7	57.8	27.2
987	22.10.2024 8.56.03	56.5	8.8	57.8	27.2
988	22.10.2024 8.57.03	56.5	8.7	57.8	27.2
989	22.10.2024 8.58.03	56.5	8.8	57.7	27.2
990	22.10.2024 8.59.03	56.5	8.7	57.7	27.2
991	22.10.2024 9.00.03	56.4	8.9	57.7	27.2
992	22.10.2024 9.01.03	56.4	8.8	57.8	27.2
993	22.10.2024 9.02.03	56.4	8.5	57.7	27.2
994	22.10.2024 9.03.03	56.4	8.6	57.7	27.2
995	22.10.2024 9.04.03	56.4	8.6	57.7	27.2
996	22.10.2024 9.05.03	56.4	8.2	57.6	27.2
997	22.10.2024 9.06.03	56.4	8.4	57.6	27.2
998	22.10.2024 9.07.03	56.6	8.4	57.6	27.2
999	22.10.2024 9.08.03	56.6	8.6	57.6	27.2
1000	22.10.2024 9.09.03	56.5	8.2	57.6	27.2
1001	22.10.2024 9.10.03	56.5	8.4	57.5	27.2
1002	22.10.2024 9.11.03	56.5	8.4	57.5	27.2
1003	22.10.2024 9.12.03	56.4	8.4	57.5	27.2
1004	22.10.2024 9.13.03	56.4	8.6	57.4	27.2
1005	22.10.2024 9.14.03	56.4	8.6	57.5	27.2
1006	22.10.2024 9.15.03	56.4	8.6	57.4	27.2
1007	22.10.2024 9.16.03	56.4	8.4	57.5	27.2
1008	22.10.2024 9.17.03	56.4	8.5	57.4	27.2
1009	22.10.2024 9.18.03	56.3	8.3	57.4	27.2
1010	22.10.2024 9.19.03	56.5	8.4	57.3	27.2
1011	22.10.2024 9.20.03	56.6	8.6	57.4	27.2
1012	22.10.2024 9.21.03	56.6	8.5	57.3	27.2
1013	22.10.2024 9.22.03	56.6	8.5	57.3	27.2
1014	22.10.2024 9.23.03	56.6	8.5	57.3	27.2
1015	22.10.2024 9.24.03	56.6	8.7	57.3	27.2
1016	22.10.2024 9.25.03	56.5	8.4	57.3	27.2
1017	22.10.2024 9.26.03	56.5	8.6	57.2	27.2
1018	22.10.2024 9.27.03	56.5	8.4	57.2	27.2
1019	22.10.2024 9.28.03	56.5	8.8	57.2	27.2
1020	22.10.2024 9.29.03	56.5	8.5	57.2	27.1
1021	22.10.2024 9.30.03	56.5	8.4	57.1	27.2
1022	22.10.2024 9.31.03	56.4	8.5	57.1	27.1
1023	22.10.2024 9.32.03	56.4	8.9	57.1	27.1
1024	22.10.2024 9.33.03	56.4	8.7	57.0	27.1



ID	Date/time	Lkv [°C]	Ulkolämpötila [°C]	MLP / puukattila meno [°C]	Patteriverkko menovesi [°C]
1025	22.10.2024 9.34.03	56.3	8.7	57.0	27.1
1026	22.10.2024 9.35.03	56.3	8.8	57.0	27.1
1027	22.10.2024 9.36.03	56.3	8.6	57.0	27.1
1028	22.10.2024 9.37.03	56.5	8.9	56.9	27.1
1029	22.10.2024 9.38.03	56.5	8.8	56.9	27.1
1030	22.10.2024 9.39.03	56.5	8.7	56.9	27.1
1031	22.10.2024 9.40.03	56.5	8.7	56.9	27.1
1032	22.10.2024 9.41.03	56.4	8.6	56.9	27.1
1033	22.10.2024 9.42.03	56.4	8.9	56.9	27.1
1034	22.10.2024 9.43.03	56.4	8.8	56.8	27.1
1035	22.10.2024 9.44.03	56.4	8.8	56.8	27.1
1036	22.10.2024 9.45.03	56.3	8.6	56.8	27.1
1037	22.10.2024 9.46.03	56.3	8.8	56.8	27.1
1038	22.10.2024 9.47.03	56.3	8.5	56.8	27.1
1039	22.10.2024 9.48.03	56.3	8.9	56.8	27.1
1040	22.10.2024 9.49.03	56.3	8.8	56.8	27.1
1041	22.10.2024 9.50.03	56.3	8.7	56.7	27.1
1042	22.10.2024 9.51.03	56.3	9.1	56.6	27.1
1043	22.10.2024 9.52.03	56.3	8.8	56.6	27.1
1044	22.10.2024 9.53.03	56.3	8.7	56.7	27.1
1045	22.10.2024 9.54.03	56.3	8.8	56.6	27.1
1046	22.10.2024 9.55.03	56.3	8.6	56.6	27.1
1047	22.10.2024 9.56.03	56.3	8.6	56.5	27.1
1048	22.10.2024 9.57.03	56.3	9.1	56.5	27.1
1049	22.10.2024 9.58.03	56.3	8.8	56.5	27.1
1050	22.10.2024 9.59.03	56.2	8.7	56.5	27.1
1051	22.10.2024 10.00.03	56.2	9.1	56.5	27.1
1052	22.10.2024 10.01.03	56.2	9.1	56.4	27.1
1053	22.10.2024 10.02.03	56.2	9.1	56.4	27.1
1054	22.10.2024 10.03.03	56.2	9.2	56.4	27.1
1055	22.10.2024 10.04.03	56.1	9.4	56.4	27.1
1056	22.10.2024 10.05.03	56.1	9.0	56.4	27.1
1057	22.10.2024 10.06.03	56.1	9.0	56.4	27.1
1058	22.10.2024 10.07.03	56.1	9.1	56.3	27.1
1059	22.10.2024 10.08.03	56.0	9.1	56.4	27.1
1060	22.10.2024 10.09.03	56.0	9.3	56.3	27.1
1061	22.10.2024 10.10.03	56.0	9.2	56.2	27.1
1062	22.10.2024 10.11.03	56.0	9.1	56.2	27.1
1063	22.10.2024 10.12.03	56.0	9.3	56.1	27.1
1064	22.10.2024 10.13.03	56.0	9.3	56.1	27.0
1065	22.10.2024 10.14.03	55.9	9.3	56.1	27.1
1066	22.10.2024 10.15.03	55.9	9.5	56.1	27.0
1067	22.10.2024 10.16.03	55.9	9.4	56.2	27.0
1068	22.10.2024 10.17.03	55.9	9.2	56.1	27.0

ID	Date/time	Lkv [°C]	Ulkolämpötila [°C]	MLP / puukattila meno [°C]	Patteriverkko menovesi [°C]
1069	22.10.2024 10.18.03	55.8	9.5	56.1	27.0
1070	22.10.2024 10.19.03	55.8	9.3	56.0	27.0
1071	22.10.2024 10.20.03	55.8	9.3	56.0	27.0
1072	22.10.2024 10.21.03	55.7	9.3	56.1	27.0
1073	22.10.2024 10.22.03	55.8	9.5	56.0	27.0
1074	22.10.2024 10.23.03	55.7	9.4	56.0	27.0
1075	22.10.2024 10.24.03	55.7	9.5	55.9	27.0
1076	22.10.2024 10.25.03	55.6	9.8	55.9	27.0
1077	22.10.2024 10.26.03	55.5	9.5	55.9	27.0
1078	22.10.2024 10.27.03	55.5	9.6	55.9	27.0
1079	22.10.2024 10.28.03	55.6	9.6	55.8	27.0
1080	22.10.2024 10.29.03	55.5	9.5	55.8	27.0
1081	22.10.2024 10.30.03	55.5	9.3	55.8	27.0
1082	22.10.2024 10.31.03	55.5	9.4	55.8	27.0
1083	22.10.2024 10.32.03	55.5	9.6	55.7	27.0
1084	22.10.2024 10.33.03	55.5	9.4	55.7	27.0
1085	22.10.2024 10.34.03	55.5	9.3	55.7	27.0
1086	22.10.2024 10.35.03	55.4	9.6	55.6	27.0
1087	22.10.2024 10.36.03	55.4	9.5	55.7	27.0
1088	22.10.2024 10.37.03	55.4	9.6	55.7	27.0
1089	22.10.2024 10.38.03	55.4	9.6	55.6	27.0
1090	22.10.2024 10.39.03	55.3	9.5	55.6	27.0
1091	22.10.2024 10.40.03	55.3	9.4	55.6	27.0
1092	22.10.2024 10.41.03	55.3	9.5	55.6	27.0
1093	22.10.2024 10.42.03	55.3	9.3	55.6	27.0
1094	22.10.2024 10.43.03	55.3	9.6	55.6	27.0
1095	22.10.2024 10.44.03	55.2	9.6	55.6	27.0
1096	22.10.2024 10.45.03	55.2	9.4	55.5	27.0
1097	22.10.2024 10.46.03	55.2	9.3	55.5	27.0
1098	22.10.2024 10.47.03	55.2	9.3	55.4	26.9
1099	22.10.2024 10.48.03	55.2	9.3	55.3	26.9
1100	22.10.2024 10.49.03	55.1	9.5	55.4	26.9
1101	22.10.2024 10.50.03	54.9	9.5	55.4	26.9
1102	22.10.2024 10.51.03	54.7	9.6	55.4	26.9
1103	22.10.2024 10.52.03	54.6	9.4	55.4	26.9
1104	22.10.2024 10.53.03	54.8	9.4	55.3	26.9
1105	22.10.2024 10.54.03	54.9	9.6	55.2	26.9
1106	22.10.2024 10.55.03	54.9	9.5	55.2	26.9
1107	22.10.2024 10.56.03	54.9	9.6	55.2	26.9
1108	22.10.2024 10.57.03	54.9	9.5	55.2	26.9
1109	22.10.2024 10.58.03	54.6	9.6	55.1	26.9
1110	22.10.2024 10.59.03	51.7	9.6	55.1	26.9
1111	22.10.2024 11.00.03	51.3	9.6	55.2	26.9
1112	22.10.2024 11.01.03	52.6	9.6	55.2	26.9

ID	Date/time	Lkv [°C]	Ulkolämpötila [°C]	MLP / puukattila meno [°C]	Patteriverkko menovesi [°C]
1113	22.10.2024 11.02.03	53.8	9.6	54.9	26.9
1114	22.10.2024 11.03.03	54.4	9.7	54.7	26.9
1115	22.10.2024 11.04.03	54.6	9.6	54.7	26.9
1116	22.10.2024 11.05.03	54.6	9.6	54.6	26.9
1117	22.10.2024 11.06.03	54.6	9.6	54.7	26.9
1118	22.10.2024 11.07.03	54.6	9.8	54.6	26.9
1119	22.10.2024 11.08.03	54.5	9.8	54.7	26.7
1120	22.10.2024 11.09.03	54.5	9.7	54.5	26.5
1121	22.10.2024 11.10.03	54.5	9.7	54.7	26.5
1122	22.10.2024 11.11.03	54.5	9.8	54.6	26.5
1123	22.10.2024 11.12.03	54.5	9.7	54.7	26.4
1124	22.10.2024 11.13.03	54.2	9.8	54.7	26.4
1125	22.10.2024 11.14.03	54.2	9.9	54.8	26.4
1126	22.10.2024 11.15.03	53.8	9.9	54.9	26.4
1127	22.10.2024 11.16.03	54.2	9.8	54.8	26.4
1128	22.10.2024 11.17.03	54.3	9.8	54.6	26.4
1129	22.10.2024 11.18.03	54.3	9.8	54.6	26.4
1130	22.10.2024 11.19.03	54.3	9.9	54.6	26.4
1131	22.10.2024 11.20.03	54.3	9.8	54.6	26.4
1132	22.10.2024 11.21.03	54.3	9.8	54.6	26.4
1133	22.10.2024 11.22.03	54.3	9.8	54.7	26.4
1134	22.10.2024 11.23.03	54.3	9.8	54.6	26.3
1135	22.10.2024 11.24.03	54.3	9.8	54.6	26.3
1136	22.10.2024 11.25.03	54.2	9.9	54.5	26.3
1137	22.10.2024 11.26.03	54.2	9.8	54.5	26.3
1138	22.10.2024 11.27.03	54.2	9.9	54.5	26.3
1139	22.10.2024 11.28.03	54.2	9.8	54.5	26.3
1140	22.10.2024 11.29.03	54.2	9.9	54.6	26.5
1141	22.10.2024 11.30.03	54.2	10.0	54.5	26.5
1142	22.10.2024 11.31.03	54.1	10.0	54.5	26.6
1143	22.10.2024 11.32.03	54.1	10.0	54.4	26.6
1144	22.10.2024 11.33.03	54.1	9.9	54.4	26.6
1145	22.10.2024 11.34.03	54.0	10.0	54.4	26.6
1146	22.10.2024 11.35.03	54.0	10.0	54.4	26.6
1147	22.10.2024 11.36.03	54.0	10.0	54.3	26.6
1148	22.10.2024 11.37.03	54.0	10.1	54.3	26.5
1149	22.10.2024 11.38.03	54.0	10.1	54.3	26.5
1150	22.10.2024 11.39.03	54.0	10.0	54.3	26.5
1151	22.10.2024 11.40.03	53.9	10.1	54.3	26.5
1152	22.10.2024 11.41.03	53.9	10.1	54.2	26.5
1153	22.10.2024 11.42.03	53.9	10.2	54.1	26.5
1154	22.10.2024 11.43.03	53.8	10.2	54.1	26.5
1155	22.10.2024 11.44.03	53.8	10.2	54.1	26.6
1156	22.10.2024 11.45.03	53.8	10.2	54.1	26.6

ID	Date/time	Lkv [°C]	Ulkolämpötila [°C]	MLP / puukattila meno [°C]	Patteriverkko menovesi [°C]
1157	22.10.2024 11.46.03	53.8	10.2	54.1	26.6
1158	22.10.2024 11.47.03	53.8	10.3	54.0	26.6
1159	22.10.2024 11.48.03	53.7	10.2	54.0	26.6
1160	22.10.2024 11.49.03	53.7	10.3	54.1	26.6
1161	22.10.2024 11.50.03	53.7	10.2	54.1	26.6
1162	22.10.2024 11.51.03	53.7	10.2	54.0	26.6
1163	22.10.2024 11.52.03	53.7	10.2	54.0	26.6
1164	22.10.2024 11.53.03	53.7	10.3	53.9	26.6
1165	22.10.2024 11.54.03	53.6	10.4	54.0	26.6
1166	22.10.2024 11.55.03	53.6	10.2	53.9	26.5
1167	22.10.2024 11.56.03	53.6	10.3	53.9	26.5
1168	22.10.2024 11.57.03	53.6	10.3	53.9	26.5
1169	22.10.2024 11.58.03	53.6	10.3	53.9	26.5
1170	22.10.2024 11.59.03	53.5	10.4	53.8	26.5
1171	22.10.2024 12.00.03	53.5	10.3	53.9	26.5
1172	22.10.2024 12.01.03	53.5	10.3	53.8	26.6
1173	22.10.2024 12.02.03	53.5	10.3	53.9	26.6
1174	22.10.2024 12.03.03	53.5	10.3	53.8	26.6
1175	22.10.2024 12.04.03	53.4	10.4	53.7	26.6
1176	22.10.2024 12.05.03	53.4	10.4	53.8	26.5
1177	22.10.2024 12.06.03	53.4	10.4	53.8	26.5
1178	22.10.2024 12.07.03	53.4	10.4	53.7	26.5
1179	22.10.2024 12.08.03	53.4	10.3	53.7	26.5
1180	22.10.2024 12.09.03	53.3	10.4	53.8	26.5
1181	22.10.2024 12.10.03	53.3	10.4	53.6	26.5
1182	22.10.2024 12.11.03	53.3	10.4	53.5	26.5
1183	22.10.2024 12.12.03	53.3	10.4	53.5	26.5
1184	22.10.2024 12.13.03	53.3	10.4	53.5	26.5
1185	22.10.2024 12.14.03	53.3	10.4	53.6	26.5
1186	22.10.2024 12.15.03	53.2	10.4	53.5	26.5
1187	22.10.2024 12.16.03	53.2	10.4	53.5	26.5
1188	22.10.2024 12.17.03	53.2	10.4	53.5	26.5
1189	22.10.2024 12.18.03	53.2	10.4	53.4	26.5
1190	22.10.2024 12.19.03	53.1	10.4	53.5	26.5
1191	22.10.2024 12.20.03	53.1	10.4	53.5	26.5
1192	22.10.2024 12.21.03	53.1	10.4	53.4	26.5
1193	22.10.2024 12.22.03	53.1	10.4	53.4	26.5
1194	22.10.2024 12.23.03	53.1	10.4	53.3	26.5
1195	22.10.2024 12.24.03	53.0	10.4	53.3	26.5
1196	22.10.2024 12.25.03	53.0	10.4	53.3	26.5
1197	22.10.2024 12.26.03	53.0	10.4	53.3	26.5
1198	22.10.2024 12.27.03	53.0	10.4	53.4	26.5
1199	22.10.2024 12.28.03	53.0	10.4	53.3	26.5
1200	22.10.2024 12.29.03	52.9	10.3	53.2	26.5

ID	Date/time	Lkv [°C]	Ulkolämpötila [°C]	MLP / puukattila meno [°C]	Patteriverkko menovesi [°C]
1201	22.10.2024 12.30.03	52.9	10.4	53.3	26.5
1202	22.10.2024 12.31.03	52.9	10.3	53.3	26.5
1203	22.10.2024 12.32.03	52.9	10.3	53.3	26.5
1204	22.10.2024 12.33.03	52.9	10.4	53.2	26.5
1205	22.10.2024 12.34.03	52.9	10.4	53.1	26.5
1206	22.10.2024 12.35.03	52.8	10.4	53.1	26.5
1207	22.10.2024 12.36.03	52.8	10.4	53.1	26.5
1208	22.10.2024 12.37.03	52.8	10.3	53.1	26.5
1209	22.10.2024 12.38.03	52.8	10.4	53.0	26.5
1210	22.10.2024 12.39.03	52.7	10.4	53.0	26.5
1211	22.10.2024 12.40.03	52.7	10.3	53.1	26.5
1212	22.10.2024 12.41.03	52.7	10.3	53.1	26.5
1213	22.10.2024 12.42.03	52.7	10.4	53.1	26.5
1214	22.10.2024 12.43.03	52.6	10.4	53.0	26.5
1215	22.10.2024 12.44.03	52.6	10.4	53.0	26.5
1216	22.10.2024 12.45.03	52.6	10.3	52.9	26.5
1217	22.10.2024 12.46.03	52.6	10.3	52.9	26.5
1218	22.10.2024 12.47.03	52.6	10.5	52.9	26.5
1219	22.10.2024 12.48.03	52.6	10.3	52.9	26.5
1220	22.10.2024 12.49.03	52.6	10.4	52.9	26.4
1221	22.10.2024 12.50.03	52.5	10.5	52.9	26.4
1222	22.10.2024 12.51.03	52.5	10.5	52.8	26.4
1223	22.10.2024 12.52.03	52.5	10.5	52.8	26.4
1224	22.10.2024 12.53.03	52.5	10.5	52.8	26.4
1225	22.10.2024 12.54.03	52.5	10.5	52.9	26.4
1226	22.10.2024 12.55.03	52.4	10.6	52.8	26.4
1227	22.10.2024 12.56.03	52.4	10.7	52.7	26.4
1228	22.10.2024 12.57.03	52.4	10.7	52.7	26.3
1229	22.10.2024 12.58.03	52.4	10.6	52.7	26.0
1230	22.10.2024 12.59.03	52.4	10.8	52.7	25.9
1231	22.10.2024 13.00.03	52.3	10.7	52.7	25.8
1232	22.10.2024 13.01.03	52.3	10.7	52.7	25.8
1233	22.10.2024 13.02.03	52.2	10.7	52.8	25.8
1234	22.10.2024 13.03.03	52.2	10.8	52.7	25.8
1235	22.10.2024 13.04.03	52.2	10.7	52.7	25.8
1236	22.10.2024 13.05.03	52.2	10.6	52.6	25.8
1237	22.10.2024 13.06.03	52.2	10.8	52.6	25.8
1238	22.10.2024 13.07.03	52.2	10.8	52.6	25.8
1239	22.10.2024 13.08.03	52.2	10.8	52.6	25.8
1240	22.10.2024 13.09.03	52.2	10.8	52.7	25.8
1241	22.10.2024 13.10.03	52.2	10.9	52.6	25.7
1242	22.10.2024 13.11.03	52.1	10.8	52.6	25.7
1243	22.10.2024 13.12.03	52.1	10.9	52.6	25.7
1244	22.10.2024 13.13.03	52.1	11.0	52.6	25.6

ID	Date/time	Lkv [°C]	Ulkolämpötila [°C]	MLP / puukattila meno [°C]	Patteriverkko menovesi [°C]
1245	22.10.2024 13.14.03	52.1	11.0	52.6	25.6
1246	22.10.2024 13.15.03	52.1	11.1	52.6	25.6
1247	22.10.2024 13.16.03	52.1	11.1	52.5	25.6
1248	22.10.2024 13.17.03	52.1	11.0	52.5	25.5
1249	22.10.2024 13.18.03	52.0	11.1	52.5	25.5
1250	22.10.2024 13.19.03	52.0	11.1	52.5	25.5
1251	22.10.2024 13.20.03	52.0	11.1	52.5	25.5
1252	22.10.2024 13.21.03	52.0	11.2	52.5	25.5
1253	22.10.2024 13.22.03	51.9	11.0	52.4	25.5
1254	22.10.2024 13.23.03	51.9	11.1	52.4	25.5
1255	22.10.2024 13.24.03	51.9	10.9	52.4	25.4
1256	22.10.2024 13.25.03	51.9	11.0	52.5	25.4
1257	22.10.2024 13.26.03	51.9	11.0	52.4	25.4
1258	22.10.2024 13.27.03	51.9	10.9	52.3	25.4
1259	22.10.2024 13.28.03	51.8	11.1	52.3	25.4
1260	22.10.2024 13.29.03	51.8	10.9	52.3	25.4
1261	22.10.2024 13.30.03	51.8	11.0	52.3	25.3
1262	22.10.2024 13.31.03	51.8	11.0	52.3	25.3
1263	22.10.2024 13.32.03	51.8	10.9	52.3	25.3
1264	22.10.2024 13.33.03	51.7	11.1	52.2	25.3
1265	22.10.2024 13.34.03	51.7	11.0	52.2	25.3
1266	22.10.2024 13.35.03	51.7	11.0	52.3	25.3
1267	22.10.2024 13.36.03	51.7	10.9	52.3	25.3
1268	22.10.2024 13.37.03	51.6	10.9	52.2	25.2
1269	22.10.2024 13.38.03	51.6	10.9	52.1	25.3
1270	22.10.2024 13.39.03	51.6	10.9	52.1	25.2
1271	22.10.2024 13.40.03	51.6	10.9	52.1	25.2
1272	22.10.2024 13.41.03	51.6	10.8	52.1	25.2
1273	22.10.2024 13.42.03	51.6	10.8	52.0	25.2
1274	22.10.2024 13.43.03	51.6	10.8	52.1	25.2
1275	22.10.2024 13.44.03	51.5	10.8	52.1	25.2
1276	22.10.2024 13.45.03	51.5	10.7	52.1	25.2
1277	22.10.2024 13.46.03	51.5	10.7	52.1	25.2
1278	22.10.2024 13.47.03	51.5	10.7	52.0	25.1
1279	22.10.2024 13.48.03	51.5	10.6	52.0	25.1
1280	22.10.2024 13.49.03	51.4	10.6	52.0	25.1
1281	22.10.2024 13.50.03	51.4	10.6	52.0	25.1
1282	22.10.2024 13.51.03	51.4	10.7	52.4	25.1
1283	22.10.2024 13.52.03	51.4	10.6	53.6	25.1
1284	22.10.2024 13.53.03	51.5	10.6	54.8	25.1
1285	22.10.2024 13.54.03	51.6	10.6	55.5	25.1
1286	22.10.2024 13.55.03	51.7	10.6	55.8	25.1
1287	22.10.2024 13.56.03	51.8	10.6	56.2	25.1
1288	22.10.2024 13.57.03	51.9	10.6	56.5	25.0

ID	Date/time	Lkv [°C]	Ulkolämpötila [°C]	MLP / puukattila meno [°C]	Patteriverkko menovesi [°C]
1289	22.10.2024 13.58.03	52.0	10.6	56.8	25.0
1290	22.10.2024 13.59.03	52.1	10.6	57.2	25.0
1291	22.10.2024 14.00.03	52.3	10.6	57.6	25.0
1292	22.10.2024 14.01.03	52.5	10.5	58.0	25.0
1293	22.10.2024 14.02.03	52.6	10.6	58.3	25.0
1294	22.10.2024 14.03.03	52.8	10.5	58.7	25.0
1295	22.10.2024 14.04.03	52.9	10.5	59.0	25.0
1296	22.10.2024 14.05.03	53.1	10.6	59.3	25.0
1297	22.10.2024 14.06.03	53.3	10.6	59.7	25.0
1298	22.10.2024 14.07.03	53.5	10.7	59.9	25.0
1299	22.10.2024 14.08.03	53.6	10.7	60.2	25.0
1300	22.10.2024 14.09.03	53.9	10.7	60.6	25.0
1301	22.10.2024 14.10.03	54.1	10.8	60.6	25.0
1302	22.10.2024 14.11.03	54.3	10.7	60.8	25.0
1303	22.10.2024 14.12.03	54.4	10.7	60.9	25.1
1304	22.10.2024 14.13.03	54.6	10.7	61.0	25.1
1305	22.10.2024 14.14.03	54.8	10.8	61.0	25.1
1306	22.10.2024 14.15.03	54.9	10.8	61.2	25.1
1307	22.10.2024 14.16.03	55.1	10.9	61.2	25.1
1308	22.10.2024 14.17.03	55.2	10.9	61.2	25.1
1309	22.10.2024 14.18.03	55.4	10.8	61.3	25.1
1310	22.10.2024 14.19.03	55.5	10.9	61.3	25.1
1311	22.10.2024 14.20.03	55.6	10.9	61.4	25.1
1312	22.10.2024 14.21.03	55.7	10.9	61.4	25.1
1313	22.10.2024 14.22.03	55.8	10.9	61.4	25.1
1314	22.10.2024 14.23.03	55.9	10.9	61.4	25.1
1315	22.10.2024 14.24.03	56.0	10.9	61.4	25.1
1316	22.10.2024 14.25.03	56.1	10.9	61.4	25.1
1317	22.10.2024 14.26.03	56.1	10.9	61.4	25.1
1318	22.10.2024 14.27.03	56.2	10.9	61.4	25.1
1319	22.10.2024 14.28.03	56.3	10.9	61.4	25.1
1320	22.10.2024 14.29.03	56.3	10.9	61.4	25.1
1321	22.10.2024 14.30.03	56.4	10.9	61.4	25.2
1322	22.10.2024 14.31.03	56.4	10.9	61.3	25.1
1323	22.10.2024 14.32.03	56.5	10.9	61.2	25.2
1324	22.10.2024 14.33.03	56.6	10.9	61.3	25.2
1325	22.10.2024 14.34.03	56.6	10.9	61.3	25.2
1326	22.10.2024 14.35.03	56.7	10.9	61.3	25.2
1327	22.10.2024 14.36.03	56.8	10.9	61.3	25.2
1328	22.10.2024 14.37.03	56.8	10.9	61.3	25.2
1329	22.10.2024 14.38.03	56.8	10.9	61.3	25.2
1330	22.10.2024 14.39.03	56.5	10.9	61.3	25.2
1331	22.10.2024 14.40.03	56.8	11.0	61.3	25.2
1332	22.10.2024 14.41.03	56.8	10.9	61.3	25.2

ID	Date/time	Lkv [°C]	Ulkolämpötila [°C]	MLP / puukattila meno [°C]	Patteriverkko menovesi [°C]
1333	22.10.2024 14.42.03	56.9	10.9	61.2	25.2
1334	22.10.2024 14.43.03	56.8	11.0	61.3	25.2
1335	22.10.2024 14.44.03	57.0	11.0	61.2	25.2
1336	22.10.2024 14.45.03	57.0	11.0	61.3	25.2
1337	22.10.2024 14.46.03	57.1	11.0	61.2	25.2
1338	22.10.2024 14.47.03	57.1	11.0	61.3	25.2
1339	22.10.2024 14.48.03	57.2	11.0	61.2	25.2
1340	22.10.2024 14.49.03	57.2	11.0	61.2	25.2
1341	22.10.2024 14.50.03	57.2	11.0	61.2	25.2
1342	22.10.2024 14.51.03	55.5	11.0	61.2	25.2
1343	22.10.2024 14.52.03	55.7	10.9	61.3	25.2
1344	22.10.2024 14.53.03	55.8	11.0	61.3	25.2
1345	22.10.2024 14.54.03	56.9	10.9	61.3	25.2
1346	22.10.2024 14.55.03	57.3	11.0	61.3	25.2
1347	22.10.2024 14.56.03	57.5	10.9	61.3	25.2
1348	22.10.2024 14.57.03	57.6	10.9	61.3	25.2
1349	22.10.2024 14.58.03	57.4	10.8	61.3	25.2
1350	22.10.2024 14.59.03	57.1	10.9	61.3	25.2
1351	22.10.2024 15.00.03	55.6	11.0	61.3	25.2
1352	22.10.2024 15.01.03	55.9	10.9	61.4	25.2
1353	22.10.2024 15.02.03	56.1	11.0	61.4	25.3
1354	22.10.2024 15.03.03	57.1	10.9	61.4	25.3
1355	22.10.2024 15.04.03	57.6	11.0	61.4	25.3
1356	22.10.2024 15.05.03	57.4	11.0	61.5	25.3
1357	22.10.2024 15.06.03	57.1	11.0	61.5	25.3
1358	22.10.2024 15.07.03	56.9	11.0	61.5	25.3
1359	22.10.2024 15.08.03	56.1	11.0	61.6	25.3
1360	22.10.2024 15.09.03	56.6	11.0	61.6	25.3
1361	22.10.2024 15.10.03	57.0	10.9	61.7	25.3
1362	22.10.2024 15.11.03	56.8	11.0	61.8	25.3
1363	22.10.2024 15.12.03	57.0	10.9	61.9	25.3
1364	22.10.2024 15.13.03	57.0	11.0	62.0	25.3
1365	22.10.2024 15.14.03	56.2	10.9	62.0	25.3
1366	22.10.2024 15.15.03	56.5	10.9	62.1	25.3
1367	22.10.2024 15.16.03	56.8	10.9	62.2	25.3
1368	22.10.2024 15.17.03	56.4	10.9	62.4	25.3
1369	22.10.2024 15.18.03	57.2	10.9	62.5	25.3
1370	22.10.2024 15.19.03	57.0	10.9	62.6	25.3
1371	22.10.2024 15.20.03	57.0	10.8	62.4	25.3
1372	22.10.2024 15.21.03	57.1	10.9	62.2	25.3
1373	22.10.2024 15.22.03	57.0	10.9	62.0	25.3
1374	22.10.2024 15.23.03	57.0	11.0	62.0	25.3
1375	22.10.2024 15.24.03	56.7	10.9	61.8	25.3
1376	22.10.2024 15.25.03	56.6	10.9	61.7	25.3



ID	Date/time	Lkv [°C]	Ulkolämpötila [°C]	MLP / puukattila meno [°C]	Patteriverkko menovesi [°C]
1377	22.10.2024 15.26.03	56.2	10.9	61.6	25.3
1378	22.10.2024 15.27.03	57.0	10.9	61.5	25.3
1379	22.10.2024 15.28.03	56.9	10.9	61.4	25.3
1380	22.10.2024 15.29.03	56.8	10.9	61.2	25.3
1381	22.10.2024 15.30.03	56.9	10.9	61.2	25.3
1382	22.10.2024 15.31.03	56.5	10.9	60.9	25.3
1383	22.10.2024 15.32.03	56.6	10.9	60.8	25.3
1384	22.10.2024 15.33.03	55.8	10.9	60.6	25.3
1385	22.10.2024 15.34.03	56.8	10.9	60.5	25.3
1386	22.10.2024 15.35.03	57.1	11.0	60.1	25.3
1387	22.10.2024 15.36.03	56.9	10.9	57.7	25.4
1388	22.10.2024 15.37.03	56.9	10.9	56.9	25.3
1389	22.10.2024 15.38.03	56.8	10.9	56.7	25.3
1390	22.10.2024 15.39.03	56.5	10.9	56.7	25.4
1391	22.10.2024 15.40.03	56.1	10.8	56.8	25.4
1392	22.10.2024 15.41.03	56.0	10.9	56.9	25.4
1393	22.10.2024 15.42.03	56.7	10.9	56.9	25.4
1394	22.10.2024 15.43.03	55.9	10.8	57.0	25.4
1395	22.10.2024 15.44.03	56.8	10.9	57.1	25.4
1396	22.10.2024 15.45.03	56.8	10.8	57.2	25.4
1397	22.10.2024 15.46.03	57.1	10.8	57.2	25.4
1398	22.10.2024 15.47.03	57.0	10.8	57.3	25.4
1399	22.10.2024 15.48.03	56.9	10.8	57.4	25.4
1400	22.10.2024 15.49.03	56.8	10.8	57.3	25.4
1401	22.10.2024 15.50.03	56.7	10.8	57.4	25.4
1402	22.10.2024 15.51.03	56.5	10.8	57.4	25.4
1403	22.10.2024 15.52.03	56.5	10.8	57.4	25.4
1404	22.10.2024 15.53.03	56.5	10.8	57.5	25.4
1405	22.10.2024 15.54.03	56.5	10.7	57.6	25.4
1406	22.10.2024 15.55.03	56.4	10.8	57.6	25.4
1407	22.10.2024 15.56.03	56.4	10.8	57.6	25.4
1408	22.10.2024 15.57.03	56.3	10.7	57.7	25.4
1409	22.10.2024 15.58.03	56.3	10.8	57.7	25.4
1410	22.10.2024 15.59.03	56.4	10.7	57.8	25.4
1411	22.10.2024 16.00.03	56.3	10.7	57.7	25.4
1412	22.10.2024 16.01.03	56.6	10.7	57.8	25.4
1413	22.10.2024 16.02.03	56.8	10.8	57.8	25.4
1414	22.10.2024 16.03.03	56.8	10.7	57.9	25.4
1415	22.10.2024 16.04.03	56.6	10.7	57.8	25.3
1416	22.10.2024 16.05.03	56.6	10.7	57.9	25.4
1417	22.10.2024 16.06.03	56.5	10.8	57.9	25.4
1418	22.10.2024 16.07.03	56.5	10.8	57.9	25.4
1419	22.10.2024 16.08.03	56.5	10.7	57.9	25.4
1420	22.10.2024 16.09.03	56.5	10.7	57.9	25.4

ID	Date/time	Lkv [°C]	Ulkolämpötila [°C]	MLP / puukattila meno [°C]	Patteriverkko menovesi [°C]
1421	22.10.2024 16.10.03	56.4	10.8	57.9	25.4
1422	22.10.2024 16.11.03	56.0	10.8	57.9	25.4
1423	22.10.2024 16.12.03	56.3	10.7	57.9	25.4
1424	22.10.2024 16.13.03	56.4	10.6	57.9	25.4
1425	22.10.2024 16.14.03	56.4	10.6	57.9	25.4
1426	22.10.2024 16.15.03	56.3	10.6	57.8	25.4
1427	22.10.2024 16.16.03	56.6	10.7	57.8	25.4
1428	22.10.2024 16.17.03	56.6	10.7	57.8	25.4
1429	22.10.2024 16.18.03	56.6	10.7	57.8	25.3
1430	22.10.2024 16.19.03	56.7	10.7	57.7	25.4
1431	22.10.2024 16.20.03	56.7	10.6	57.6	25.3
1432	22.10.2024 16.21.03	56.7	10.7	57.7	25.3
1433	22.10.2024 16.22.03	56.7	10.8	57.7	25.3
1434	22.10.2024 16.23.03	56.7	10.7	57.7	25.3
1435	22.10.2024 16.24.03	56.6	10.6	57.6	25.3
1436	22.10.2024 16.25.03	56.6	10.7	57.7	25.3
1437	22.10.2024 16.26.03	56.6	10.6	57.6	25.3
1438	22.10.2024 16.27.03	56.6	10.6	57.6	25.3
1439	22.10.2024 16.28.03	56.5	10.7	57.6	25.3
1440	22.10.2024 16.29.03	56.5	10.8	57.6	25.3
1441	22.10.2024 16.30.03	56.5	10.7	57.6	25.3
1442	22.10.2024 16.31.03	56.5	10.8	57.5	25.3
1443	22.10.2024 16.32.03	56.5	10.7	57.5	25.3
1444	22.10.2024 16.33.03	56.4	10.7	57.5	25.3
1445	22.10.2024 16.34.03	56.5	10.7	57.4	25.3
1446	22.10.2024 16.35.03	56.5	10.8	57.5	25.3
1447	22.10.2024 16.36.03	56.4	10.6	57.4	25.3
1448	22.10.2024 16.37.03	56.4	10.6	57.4	25.3
1449	22.10.2024 16.38.03	56.4	10.6	57.4	25.3
1450	22.10.2024 16.39.03	56.4	10.6	57.4	25.3
1451	22.10.2024 16.40.03	56.3	10.6	57.4	25.3
1452	22.10.2024 16.41.03	56.3	10.6	57.3	25.3
1453	22.10.2024 16.42.03	56.3	10.7	57.3	25.3
1454	22.10.2024 16.43.03	56.3	10.6	57.3	25.3
1455	22.10.2024 16.44.03	56.5	10.6	57.3	25.3
1456	22.10.2024 16.45.03	56.5	10.6	57.3	25.3
1457	22.10.2024 16.46.03	56.5	10.7	57.3	25.3
1458	22.10.2024 16.47.03	56.5	10.6	57.2	25.3
1459	22.10.2024 16.48.03	56.5	10.7	57.2	25.3
1460	22.10.2024 16.49.03	56.4	10.6	57.2	25.3
1461	22.10.2024 16.50.03	56.4	10.6	57.2	25.3
1462	22.10.2024 16.51.03	56.2	10.6	57.2	25.3
1463	22.10.2024 16.52.03	56.2	10.5	57.1	25.3
1464	22.10.2024 16.53.03	56.1	10.6	57.1	25.3

ID	Date/time	Lkv [°C]	Ulkolämpötila [°C]	MLP / puukattila meno [°C]	Patteriverkko menovesi [°C]
1465	22.10.2024 16.54.03	56.2	10.6	57.1	25.2
1466	22.10.2024 16.55.03	56.4	10.5	57.1	25.2
1467	22.10.2024 16.56.03	56.5	10.5	56.9	25.2
1468	22.10.2024 16.57.03	56.5	10.4	56.8	25.2
1469	22.10.2024 16.58.03	56.5	10.5	56.9	25.2
1470	22.10.2024 16.59.03	56.5	10.4	56.9	25.2
1471	22.10.2024 17.00.03	56.4	10.4	57.0	25.2
1472	22.10.2024 17.01.03	56.4	10.4	57.0	25.2
1473	22.10.2024 17.02.03	56.4	10.4	56.9	25.2
1474	22.10.2024 17.03.03	56.4	10.5	56.8	25.2
1475	22.10.2024 17.04.03	56.4	10.6	56.8	25.2
1476	22.10.2024 17.05.03	56.4	10.5	56.7	25.2
1477	22.10.2024 17.06.03	56.4	10.4	56.7	25.2
1478	22.10.2024 17.07.03	56.4	10.6	56.7	25.2
1479	22.10.2024 17.08.03	56.3	10.5	56.7	25.2
1480	22.10.2024 17.09.03	56.3	10.5	56.7	25.2
1481	22.10.2024 17.10.03	56.3	10.5	56.7	25.2
1482	22.10.2024 17.11.03	56.3	10.5	56.7	25.2
1483	22.10.2024 17.12.03	56.2	10.4	56.7	25.2
1484	22.10.2024 17.13.03	56.2	10.4	56.7	25.2
1485	22.10.2024 17.14.03	55.8	10.4	56.6	25.2
1486	22.10.2024 17.15.03	54.5	10.4	56.6	25.2
1487	22.10.2024 17.16.03	53.6	10.3	56.6	25.2
1488	22.10.2024 17.17.03	54.4	10.3	56.6	25.2
1489	22.10.2024 17.18.03	53.5	10.5	56.5	25.2
1490	22.10.2024 17.19.03	49.1	10.3	56.3	25.2
1491	22.10.2024 17.20.03	51.0	10.3	56.2	25.2
1492	22.10.2024 17.21.03	52.6	10.5	56.2	25.2
1493	22.10.2024 17.22.03	54.2	10.3	56.2	25.2
1494	22.10.2024 17.23.03	55.0	10.5	56.0	25.2
1495	22.10.2024 17.24.03	55.5	10.4	55.8	25.2
1496	22.10.2024 17.25.03	55.4	10.4	55.8	25.2
1497	22.10.2024 17.26.03	54.6	10.4	55.8	25.2
1498	22.10.2024 17.27.03	53.5	10.4	55.9	25.2
1499	22.10.2024 17.28.03	52.5	10.5	55.9	25.2
1500	22.10.2024 17.29.03	----	----	----	----
1501	22.10.2024 17.30.03	----	----	----	----
1502	22.10.2024 17.31.03	----	----	----	----
1503	22.10.2024 17.32.03	----	----	----	----
1504	22.10.2024 17.33.03	----	----	----	----
1505	22.10.2024 17.34.03	----	----	----	----
1506	22.10.2024 17.35.03	----	----	----	----